



Pabulum

Perth Waldorf School

14 Gwilliam Drive,

Bibra Lake WA 6163

Telephone: 9417 3638

Email: adminpws@pws.wa.edu.au

Website: www.pws.wa.edu.au

TERM 1 CALENDAR

APRIL

| | |
|--------|----------------------------------|
| Fri 12 | Class 7 Wardong Return from Camp |
| Fri 12 | Foot Washing Assembly |
| Fri 12 | LAST DAY OF TERM 1 |

SCHOOL HOLIDAYS

Friday, 12th April is the last day of Term 1. School will recommence in Term 2 on Tuesday, 30th April.

Our holiday office hours are Monday to Friday, 9:00am-3:00pm.

The office will be closed from Friday, 19th April and re-open on Monday, 29th April from 10:00am

TERM DATES

Term 2 - Tues, 30th April - Fri, 28th June

Term 3 - Mon, 22nd July - Thur, 26th Sept

Term 4 - Mon, 14th Oct - Thur, 17th Dec (half day)

PABULUM NOTICE

Dear PWS Community,

Please note that there will be no Pabulum edition for the first week of Term 2. Our first Pabulum for Term 2 will be distributed on Tuesday, 7th May (Week 2).

We apologise for any inconvenience this may cause.

Ashley Baker and Sarah Boyle -
Pabulum Publisher and Editor



Term 1, Week 10

Tuesday, 9th April, 2019

Bushfire Management

The school has a number of building projects being planned. In the last year these have been delayed by new Bushfire Management protocols that the school must follow. The new Bushfire Management approach by the state government is a result of what has been learned over time from incidents in WA and over East.

PWS has been recognised as being in an area that is at risk of bushfire and has had to update its Bushfire Management Plan. Our plan was prepared during this term by an independent expert and has been submitted to the Cockburn Council as part of the development application process. Although there are a number of protocols the school must observe, two that affect future building are:

- 1) No trees and limited vegetation to be within 6 meters of any new building structure
- 2) Strictly controlled and sparse vegetation including trees not having a canopy that touches another tree canopy for 17 meters from any new building.

The school had already implemented a number of measures to make the campus safe. Now we will continue to work creatively to protect the natural environment including flora and fauna while at the same time keeping everyone safe.

We appreciate the work Peggy Crane and our Grounds and Maintenance staff have done in working with the independent expert, Linden Wears of Strategen Environmental to prepare a Bushfire Management Plan suited to 2019 conditions and regulations.

Thanks to Paddy, Jadon, Kevin, Trish and Val and all the parents and other staff for leading camps these last two weeks.

We wish Jadon (Class 8 Guardian) and partner Kashaca all the best for their **marriage ceremony** this weekend.

We wish everyone a peaceful break over **Easter**. Be safe and see you on Tuesday, 30th April.



Bruce Lee - School Administrator

STUDENT ABSENCES:

Please let the office know by 8:30am.

Text: 0429 680 969, Phone: 9417 3638,

Email: absence@pws.wa.edu.au,

PABULUM INFORMATION:

- Pabulum contributions need to be emailed to pabulum@pws.wa.edu.au by 2:15pm Thursdays.
- To view Pabulum as a PDF, go to www.pws.wa.edu.au
- To receive the link via email, please send a request to adminpws@pws.wa.edu.au

IN THE LIGHT OF A CHILD

And when the golden summer sun grows weaker in our skies,
I know it really does not die – it just goes through a change.

For it has given its very self to me, in me it lies

As seed within my deepest heart – a thing most rich and strange.

This sun-seed – I must guard it, precious in my heart as gold.

It will live on in me through nights of winter, dark and cold,

Til lo, in spring a radiant, beauteous flower shall unfold.

Michael Hedley Burton

FROM FINANCE

SCHOOL FEES ARE NOW DUE - Term 2 Due Date: Friday, 10th May, 2019.

| CREDIT CARD/ONLINE PAYMENT | ELECTRONIC FUNDS TRANSFER | CHEQUE AND CASH |
|--|--|---|
| <p>Payments by Credit Card can be made by visiting the Bpoint website: https://www.bpoint.com.au</p> <p>Biller Code: 147 2133 Reference: Family Code</p> <p>Phone payments can also be made by calling Reception on 9417 3638 during Office Hours.</p> <p>We accept VISA and MASTERCARD.</p> | <p>Payments by Electronic Funds Transfer (EFT) can be made to the school's banking details as follows:</p> <p>Account Name: Perth Waldorf School BSB: 066 000 Account Number: 1205 1015 Commonwealth Bank Perth</p> <p>Reference: Family Code</p> | <p>Payments by cheque can be made payable to Perth Waldorf School. Please have a copy of your statement attached when mailing your cheque.</p> <p>Postal Address: PO Box 1247, Bibra Lake WA 6965</p> <p>Cheques and Cash Payments can also be made during office hours at the School Reception.</p> <p>EFTPOS terminal also available.</p> |

A late payment fee will apply to all accounts not paid by the due date. This does not apply if you have a payment plan arrangement in place.

TERM TWO FEES

Term Two fees invoices have now been emailed out to families with a due date of 10th May. If you have not received your invoice please email account@pws.wa.edu.au or see reception.

To assist with timely delivery of your invoices, please add our email address account@pws.wa.edu.au to your safe sender list. If you need assistance with this, please contact reception. Thank you.

GENERAL NEWS

TASHI STEINER SCHOOL IN NEPAL

Art Therapy In Nepal Changing Lives



In June of this year I hope to continue my volunteer work in Nepal, working alongside some remarkable young survivors of Human-Trafficking, and re-visiting the **Tashi Waldorf School in Kathmandu.**

My plan is to personally deliver donations to three small organisations who are doing really big things, providing love, support and educational programmes for these survivors. I will also be taking funds to the Tashi School, raised by many of you from our School community ~ through purchasing books from outside our school Canteen, along with some much needed 'Steiner School' materials.

More information can be found at this link to my campaign: <https://www.gofundme.com/art-therapy-in-nepal-changing-lives/>

I appreciate even the smallest donations, which together will make a difference in achieving my target.

With love and gratitude,

Eugene Chattelle - Playgroup Leader

EASTER MARKETS AND PALM WALK PHOTOS









Dear PWS Parents

Perth Waldorf School Council invites you to a

PARENT FORUM and FEEDBACK BRUNCH

Let's discuss -

What's working well for your family at PWS?
What lights your fire, and what exciting ideas
do you have for the future at PWS?

Date: Saturday 18th May 2019
Time: 8.45am – 12.30pm
Venue: Seekers Place
Catering: A substantial brunch will be
served mid-morning

Please RSVP and provide dietary
requirements to Lei Baker at
lbaker@pws.wa.edu.au

FROM COMMUNITY SUPPORT

EXPERIENCING TIME ANNE WILLIAMS



Image: Anne Williams, *Daily stitching* (detail), 2018, hand stitching on cotton, Photographer: Josh Wells.

Hand stitching can bring a gentle respite in a world where the increasing acceleration of daily life often threatens to overwhelm. Anne is conducting an investigation into how we experience the quality of time through hand stitching - working with daily, weekly and yearly rhythms.

OPENING: Thursday, 8th April 6:30pm-8:00pm.
VIEWING: Wednesday to Friday 10:00am-5:00pm, Saturday 11:00am-3:00pm.
LOCATION: Midland Junction Arts Centre,
276 Great Eastern Highway, Midland, Western Australia, 6056.
PHONE: 08 9250 8062

*Closed Friday 19th April (Good Friday), Sunday 21st April (Easter Sunday), Monday 22nd April (Easter Monday) and Thursday, 25th April (Anzac Day). Open Saturday 20th April (Easter Day).

BATS, BIRDS AND BEES TEXTILES WORKSHOP

ANNE WILLIAMS AND CATHY LEVETT

Explore the amazing world of pollinators, natural dyes and solar dyeing, discovering the potential of materials that can be found in your own backyard! Join environmentalist Cathy Levett and MJAC Artist in Residence Anne Williams, learn about how important pollinators are, then create your own a stitched pollinator with natural dyes and silken yarn to take home.



WHEN: Friday 26th April, 10:00am-1:00pm
LOCATION: Midland Junction Arts Centre
COST: \$25 | \$22.50 Members | Materials supplied
*Suitable for 7 - 14 yrs

THANK YOU FAMILIES FOR MADU DONATIONS!

We would like to express our gratitude to families whom have generously donated pre-loved toys, games and books to sell at our Easter Market stall. Money raised will go towards providing Madu Playhouse, the first Steiner school in Bali, with much needed resources such as wool, watercolour paints and coloured chalk, which are not readily available there.

Many thanks,

Penny, Jana, Renae and Simone - The Community Support Team

EARLY CHILDHOOD

FROM THE COORDINATOR

Rainbow Room children have been noticing lots of activity from the djiddee djiddee bird lately. It could be because the season of Djeran is on its way.

BLESSED BE THE TREE PLANTERS - Have you noticed the magical pomegranate tree in the Kindergarten playground lately? It's like a tree of wonderful glowing red lanterns, especially in the afternoon light. I wonder who the person was who decided to plant it? Watered and nurtured it? We are the beneficiaries of past deeds, and so grateful for the bold energy of the people who have shaped our school's environment.



Jennifer Byrne - Early Childhood Coordinator

PRIMARY SCHOOL

FROM THE COORDINATOR

Social media continued

"Hasn't the horse already bolted from the barn?" And "but my child says that everybody else is on social media!" are the most common statements that have been made in some recent conversations about children having phones and using social media sites and group chats.

Here at Perth Waldorf School we maintain that children need to be educated about and held within firm boundaries regarding their access to and use of phones and social media.

Do they already know how to act and communicate and act responsibly, ethically and safely or is this what they are still learning? Shouldn't this be done with face to face human interaction before hiding behind a device and using it as a tool?

Media is continuing to get in the way of our right to teach and I reiterate my call to you for support by again stating **"our children should not be on social media."**

Lisa Payne - Primary School Coordinator

UPDATE FROM CLASS 1

The students in Class 1 have settled beautifully into their new routines. This term we discovered the beauty of the straight and curved line and transformed them to write the consonants and some numbers. We encountered a wise woman who shared riddles that would lead to the discovery of writing Roman numbers and we followed Djarli, Hannah and Milo as they travel towards the south-west. We welcomed our buddies from Class 7 Kulbardi with whom we have shared many string games. We are learning to knit, eurythmy and German. We are discovering the feeling of colours through our paintings and drawings. The students and I have been enjoying our puppet shows on Friday afternoons.



Yvonne Suares - Class 1 Teacher

PHOTOS FROM THE CLASS 5 EURYTHMY PERFORMANCE

Class 5 showed off their expert skill in their use of the Eurythmy copper-rods to Class 4 who will begin to use copper-rods in their Eurythmy lessons later this year. They performed a lively copper-rod dance to the music of Leopold Mozart (the father of Wolfgang) which was played on the piano by Margaret Reale. Copper-rods help to improve dexterity in hands and feet, circulation, posture, timing, and moving together as a group with grace. Well done, Class 5 for a most impressive and joyful performance!





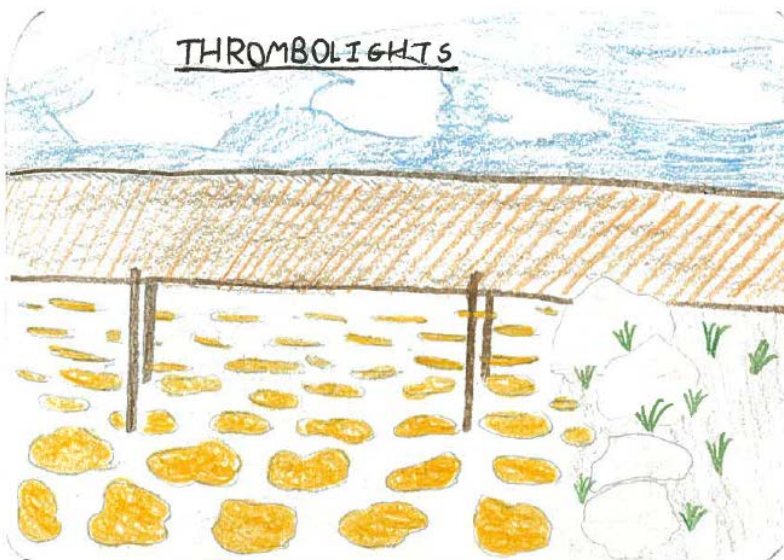
Kristina Hamilton (Eurythmy Teacher)

CLASS 6 GEOLOGY CAMP IN MARGARET RIVER LAST WEEK

Class 6 had a wonderful time exploring the geology of the Cape to Cape region of Margaret River last week. Many walks, many descents underground, among the caves, streams, and solid coastal tors of a landscape forged by soluble limestone above and impermeable granite.

Highlights included fishing in river mouths and sea coves with two great dads - Keiran and Julian. Eating Pancakes on a slow breakfast day thanks to Melody, who also swam, drove, allowed the joyful singing and patched up countless knee scrapes, bent fingers and cut toes, among the other aches. Much of the laughter back at camp was stirred by Linda, whose humour and energy never dimmed. A class treasure.

We have returned with many memories and a feeling of joyful connection as a class group.

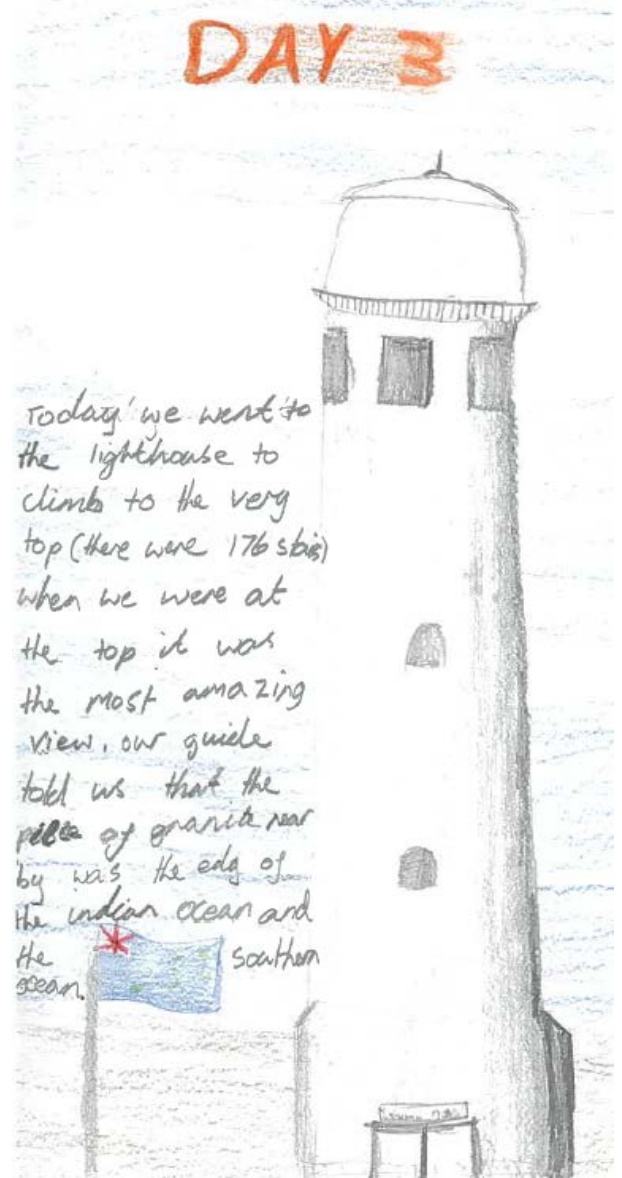


Day 1 Ngilgi cave

On the way down to Margaret River we stopped at Ngilgi cave. When we met our guide he told us some Aboriginal stories then we went down into the cave

It was very cold exactly 18°C we were taught about cave crystals and how the caves are for condensation it was slightly hard to breathe because

the carbondiox.



Stripies

Angel fish

Herring

skippy

Salmon

FISH WE CAUGHT



Connect Learning WA Before and After School Care

Connect Learning is available all year round if you ever need last minute care. Feel free to pop in for a chat with Nicola (in the Craft/German Room before and after school).

| | |
|-------------------------------|-------------------------|
| Before School Care | 6:30am to 8:25am |
| After School Care | 2:00pm to 6:00pm |
| Vacation Care | 6:30am to 6:00pm |
| Early Finish Thursdays | 2:30pm to 6:00pm |
| Pupil Free Days | 6:30am to 6:00pm |

The service is only available to Primary aged children.

Connect Learning News

Last week Nicola, Becca and Akane attended a workshop by Little Green Steps WA at South Lake OSH club. Little Green Steps WA are a not for profit organisation that supports Education for Sustainability. We discovered new ways in which we can embed sustainability into the service in addition to what the service already practices. We are looking forward to sharing and implementing our finds with the children!



PRIMARY CRAFT



HIGH SCHOOL

CLASS 9 WATER SOLUBLE GRAPHITE ARTWORK



P & F

'THE CARRIAGE' SCHOOL SHOP

OPENING TIMES:

Tuesday and Thursday from 8:15am-9:15am, and Wednesday from 2:30pm-3:30pm.

We stock all your school stationery supplies, uniforms & bags.

We also have a large range of craft supplies, jewellery, knitted items, cleaning products, salt lamps, essential oil holders, amber teething necklaces, wooden toys and books.

MAINTENANCE & GARDENING



We are a waste wise school!

We recycle what we use,
separate things and you should too!
Glass, paper, plastic and tin,
go in your RECYCLING BIN!
We must start now, we can't wait,
quick or it will be too late!



Making graffiti on any school property including desks or textbooks, is not tolerated at our school.

*If you're feeling creative or if you're just feeling bored,
And you have the constant need to scribble and draw,
Please try your best and don't be a graffiti creator,
And instead of your desk, please use a piece of scrap paper.*

COMMUNITY CLASSES

Groups/Classes

Participating in any of these activities goes towards Family Participation Hours.

These groups for parents are run or led by teachers or parents. Members of the school community are encouraged to join any of the groups and enjoy the experience of personal growth and learning in this beautiful environment - a great inspiration for our children!

Mondays, 9:00am-10:15am

Parents and Friends Study Group with Anne Williams (in the Library, no children please) **0424 771 217**.

Mondays, 10:30am-12:00pm
(fortnightly) **08/04**

Biodynamic Group with Heidi Halter (see below for details).

Tuesdays, 9:00am

Craft Group with Pixie Stott (outside the Canteen).

Tuesdays, 2:15pm-3:00pm

Eurythmy with Kristina Hamilton (in Williams Hall).

Wednesdays 9:00am

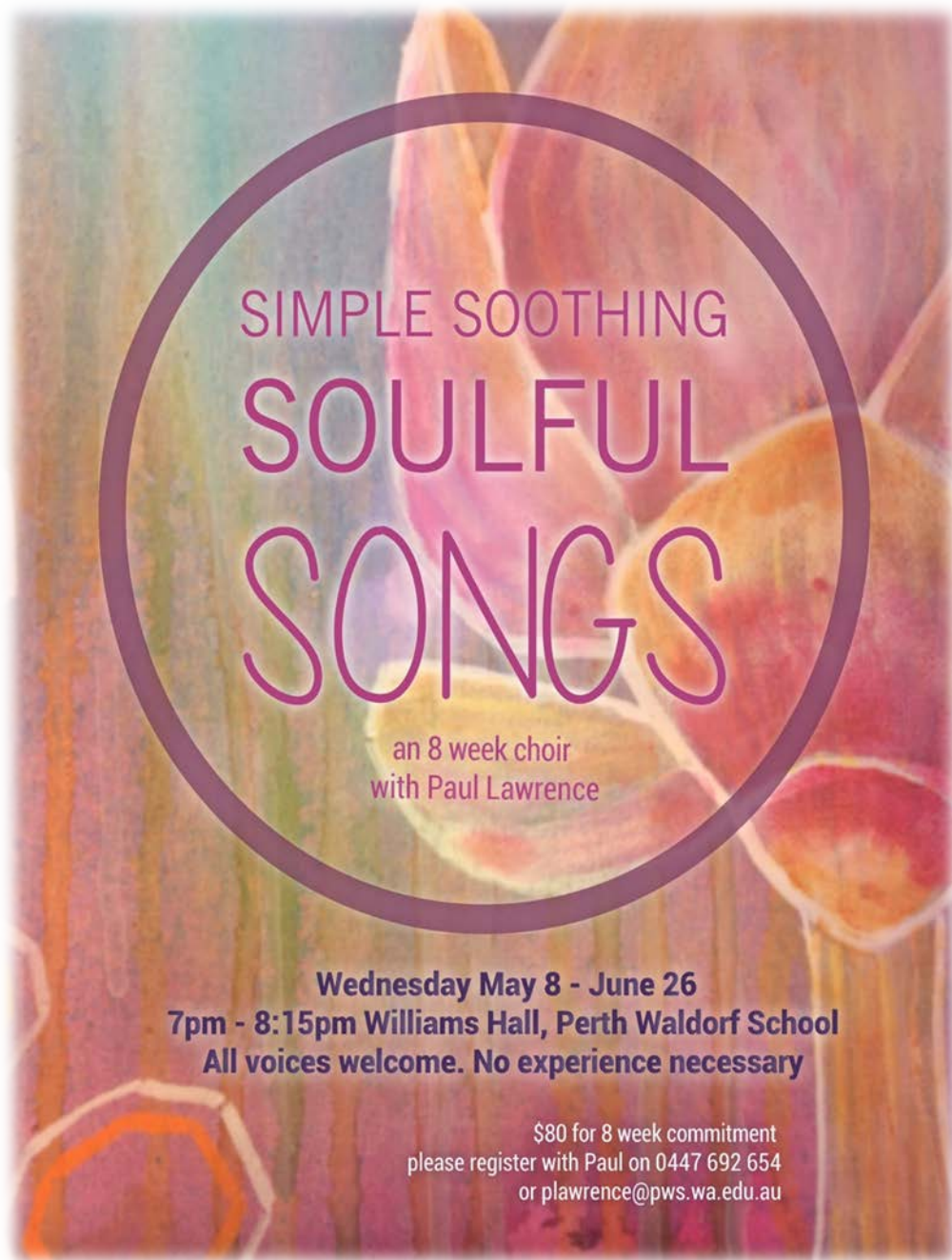
Adult Singing Come and join Claire Williamson and discover your inner voice (in the Music Office)

Thursdays, 9:00am-9:45am

Listening Circle with Bruce Lee - the Administrator (in the Library). Come in for a conversation, concern, query or just to listen.

Saturdays, 1:00pm-4:00pm

Waldorf Wood Workers with Christian Geyer (meet in Plaza) **0409 267 178**.



SCHOOL NOTICES



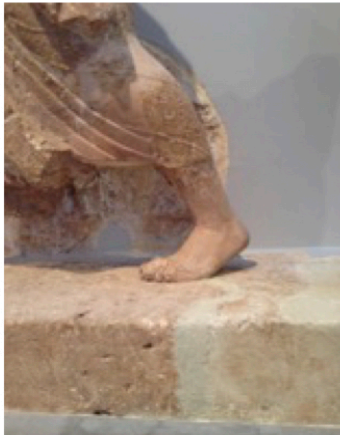
School notices are strictly for members of the school only and may consist of: lost and found items, items for sale (student/school related), and classes/lessons within the school, etc. Please restrict your notice to three lines (this is free of charge). School notices will appear in this section for two weeks. If you would like the ad to appear for longer, please contact the Pabulum on 9417 3638 each week. Thank you.

LYRE FOR SALE - Beautiful lyre for sale \$280 ono. <https://www.gumtree.com.au/s-ad/fremantle/other-musical-instruments/lyre-musical-harp/1214774590>. Contact Mark on 0450 026 871 or mark_daley@hotmail.com.

LOST VIOLA - from outside Class 5 on Friday, 15th March. If found please return to Class 5 or call Catherine on 0417 116 475.

Rudolf Steiner College Perth
Biography Work

MODULE 2: FREEDOM OR FATE

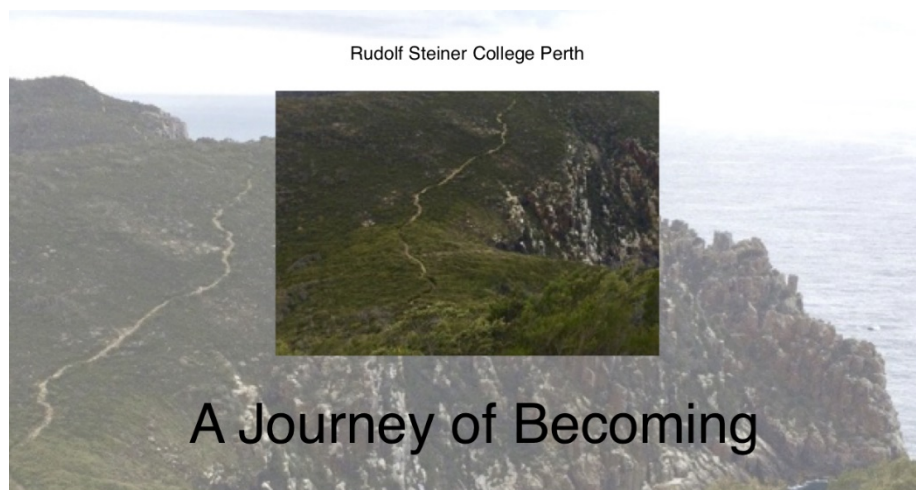


The personal chart can become a precious lifetime possession. By yearly updating we can sustain our awakening recognition of destiny in motion. Through this inner process we gain a more mature, tolerant and compassionate in-look on destiny, both ours and others.

(Bryant, W. A. A Journey through Time, 2006).

Biography Work through Destiny Learning allows a way to look at life patterns, rhythms, mirroring, destiny moments in a holistic way using the chart as the guide that expands and deepens over time. Deep listening, helping conversations, writing and gesture work will provide ways to be heard and to listen and share our becoming human.

| | |
|----------------|--|
| Where | Seekers Room. Perth Waldorf School Gwilliam Drive, Bibra Lake |
| When | Tuesday 30th April - 28th May 7 - 8.30pm |
| Booking | Dale Irving docirvo7@bigpond.com 0400959050 |



Module One in the Teacher Development Course
Dr. Lakshmi Prasanna and Patrix Orange

This course is for all those who are working as teachers, who are already part of a teacher training course, and anyone who is looking to deepen their understanding of anthroposophy through education.

The course includes :

- eurythmy to discover ourselves, each other and the child a new.
- nature observation to practise our ability to observe the other and ourselves within the activity.
- working deeply in an explorative way with the first lecture of the lecture cycle 'Study of Man' to discover some of the treasures in this unique approach to education.
- conversation, artistic work.
- lectures at the end of our afternoon program bringing human physiology and embryology to help us understand the relationship between the development of the child and the curriculum Rudolf Steiner developed out of spiritual science.

The process relies on the individual and group work we develop between us.

| | |
|--------------|--|
| When | Monday July 15th to Friday 19th 8.30 am - 4.00 pm |
| Where | Perth Waldorf School, Gwilliam Drive, Bibra Lake |
| Fee | \$630 |

For more information or to book contact Jenny Hill
jennyhill@inet.net.au 0432 735 744



COMMUNITY NOTICES



Community Notices are for members of the school's community only and may consist of; business adverts, producers, services, items for sale (non-school related), etc. keeping in mind that they need to be consistent within our schools' ethos. Please restrict your notice to three lines (this is free of charge). All Community Notices will appear in this section for two weeks only. If you would like a ¼ page advert, a \$10 fee is required and will only appear in Week 2 and Week 8.

FOR RENT - self-contained/fully equipped and furnished, spacious, light studio/granny flat for rent in White Gum Valley. Looking for friendly, considerate, eco aware, easy going single. Rent: \$280 single tenant/\$340 for a couple. \$20 per person p/w for utilities. Will need to organise own internet. Contact Lucy: **0450 715 917** or Tim: **0437 617 292**.

SPECIAL ICE SKATING OFFER - 10 weeks of lessons, discounted price of \$220, save \$59! Includes free admission and regular skate hire in any pubic session for the 10 weeks. Lessons run Thursdays from 2:45pm-3:15pm. For more details or to enrol, email nadine@cockburnicearena.com.au or call **9411 0309**.

RUTH POWELL HOLISTIC COUNSELLING - "Thinking, Feeling and Willing" Children from 4 years, Adolescence and Adults. Reasonably priced, NOR (2 min walk from Warwick train station) All information on Web site: www.ruthpowell.com.au or feel free to call **0413 080 334** for non obligation enquiry.

KINESIOLOGY SESSIONS AVAILABLE - I am a Kinesiology student and I'm looking for clients for my research project on osteoarthritis in the hips and knees. The sessions will be free of charge and starting at the end of April. Please ring Kirsten on **0424 375 765**.

ALANA ROBINS, FLOWER ESSENCE SPECIALIST - Offering flower essences and gem elixirs for the wellbeing of women, children and families. Special price of \$65 for PWS families. Phone **0407 570 950**.

PIXIE STOTT CANTEEN

Canteen Open times:

Mon and Fri, 8:10am-2:00pm.

Tues and Wed 8:10am-2:00pm. After school 3:00pm-3:15pm.

Thurs 8:10am-1:30pm. After school 2:10pm-2:30pm.

NEW FOR EASTER

The Canteen has hot cross buns from Abhis \$8.50 for 1/2 dozen or \$2 each. Grounded Pleasure Chai is also available \$11.00 for a take home pack or come try a warm cup at the canteen for \$3.50.

The canteen is looking for volunteers to help with lunch service. If you are available to help during lunch please come and let the canteen know or contact Megan at canteen@pws.wa.edu.au All time can be put towards your family participation hours.

Any donations of pre loved kitchen equipment especially forks or spoons are always welcome. The canteen would love any excess home grown fruit and vegetables especially lemons.

Now available:

- Bannister Downs milk full cream and lite \$2.00/Litre.
- Local Raw Honey 500g jar \$7.50 or bring your own jar \$12/kg.
- Organic Olive or Sunflower oil \$15/litre bring your own bottle to refill.
- Tammys' Sourdough bread is available Monday, Wednesday and Friday.
- Organic eggs \$8.50 per dozen.

Look out for our new Winter Menu for Term 2.

Thanks, Megan.