



# Pabulum

Perth Waldorf School

14 Gwilliam Drive,

Bibra Lake WA 6163

Telephone: 9417 3638

Email: [adminpws@pws.wa.edu.au](mailto:adminpws@pws.wa.edu.au)

Website: [www.pws.wa.edu.au](http://www.pws.wa.edu.au)

## TERM 1 CALENDAR

### MARCH

Wed 20 Class 9 Teacher Parent Meeting

Thur 21 Class 8 and 10 Vaccinations

Thur 21 High School Beach Day

Fri 22 Class 10A Play

Fri 22 Ride2School Day - See P&F for details

Mon 25 - Fri 29 Class 8B Camp to Dwellingup

Sun 31 - Fri 5 Class 11A Camp to Blackwood River

Sun 31 - Fri 5 April Class 7 Kulbardi Sailing Camp

### APRIL

Mon 1 - Fri 5 Class 6 Camp to Margaret River

Mon 1 Susan Laing Parent Talks - 9:00am and 6:30pm in Seekers Place

Thurs 4 P&F Meeting - 6:30pm

Tue 9 Primary Easter Palm Walk

Tue 9 Easter Markets - 9:00am-1:00pm

Sun 7 - Fri 12 Class 7 Wardong Sailing Camp

Fri 12 Foot Washing Assembly



### HIGH SCHOOL JOURNEY

Next Term - Thursday, 6th June

We will keep you posted for further details.

## Term 1, Week 7

Tuesday, 19th March, 2019

The **Bulb Fundraiser** forms are due tomorrow. Your support of this initiative is much appreciated.

This Friday Class 10A will be presenting their Drama Main Lesson at 10.40am and 6.30pm. **Grimm Tales** will come to life and everyone who attends will walk away with a strong appreciation for the Dramatic skills of these awesome young people. If you have a moment, please come along and support them. It is an excellent way to see where your children will be once they are 15 or 16.

Thanks to the drama team led by Donna Kerr for all their work and support of the students. The set looks unbelievable!

Our school is blessed to have **Susan Laing** coming to share her wisdom. Details about her are inside this edition. These opportunities are not to be missed by parents and guardians of young children (and Grandparents!). Monday week she is speaking at 9am and 6.30am. May we all strengthen our ability to meet the love that children are born to share with us.

**Ride2School (or walk) on Friday this week** and get a delicious breakfast from our P&F. This is a great way to encourage an active lifestyle. Thanks to the P&F for bringing this to our community.



Bruce is ready for Ride2School day on Friday!

PWS attended the **Steiner Education Australia** annual general meeting on the weekend. One of the discussion topics was the criteria schools need to meet in order to become members of SEA. This will be worked on and refined over coming months. For example, here's one of 5 "principles" that one group advocated as core: **ACTIVELY WORKING WITH A CONTINUING DEEPENING OF RUDOLF STEINER'S PICTURE OF CHILD DEVELOPMENT IN CURRICULUM AND METHODOLOGY.**

In gratitude,

**Bruce Lee**  
School Administrator

### STUDENT ABSENCES:

\*Please let the office know by 8:30am.\*

Text: 0429 680 969, Phone: 9417 3638,

Email: [absence@pws.wa.edu.au](mailto:absence@pws.wa.edu.au),

### PABULUM INFORMATION:

- Pabulum contributions need to be emailed to [pabulum@pws.wa.edu.au](mailto:pabulum@pws.wa.edu.au) by 2:15pm Thursdays.
- To view Pabulum as a PDF, go to [www.pws.wa.edu.au](http://www.pws.wa.edu.au)
- To receive the link via email, please send a request to [adminpws@pws.wa.edu.au](mailto:adminpws@pws.wa.edu.au)

### IN THE LIGHT OF A CHILD

*In striving forth toward the goal,  
I feel new firmness in my soul.  
The I-of-God in knowing sight  
Fills all all my will with gleaming light.*

*And in these hidden depths, this radiant glow,  
By bringing light to darkness, makes the good fruit grow.*

Michael Hedley Burton

# FROM FINANCE

**SCHOOL FEES ARE NOW OVER DUE - Term 1 Due Date: Friday, 15<sup>th</sup> February, 2019.**

CREDIT CARD/ONLINE PAYMENT	ELECTRONIC FUNDS TRANSFER	CHEQUE AND CASH
<p>Payments by Credit Card can be made by visiting the Bpoint website: <a href="https://www.bpoint.com.au">https://www.bpoint.com.au</a></p> <p><b>Biller Code: 147 2133</b> <b>Reference:</b> Family Code</p> <p>Phone payments can also be made by calling Reception on 9417 3638 during Office Hours.</p> <p>We accept VISA and MASTERCARD.</p>	<p>Payments by Electronic Funds Transfer (EFT) can be made to the school's banking details as follows:</p> <p>Account Name: Perth Waldorf School BSB: 066 000 Account Number: 1205 1015 Commonwealth Bank Perth</p> <p>Reference: <b>Family Code</b></p>	<p>Payments by cheque can be made payable to Perth Waldorf School. Please have a copy of your statement attached when mailing your cheque.</p> <p>Postal Address: PO Box 1247, Bibra Lake WA 6965</p> <p>Cheques and Cash Payments can also be made during office hours at the School Reception.</p> <p>EFTPOS terminal also available.</p>

**A late payment fee will apply to all accounts not paid by the due date. This does not apply if you have a payment plan arrangement in place.**

## **TERM ONE FEES**

Term One fees **are now overdue**. If you have not received your invoice please email [account@pws.wa.edu.au](mailto:account@pws.wa.edu.au) or see reception.

To assist with timely delivery of your invoices, please add our email address [account@pws.wa.edu.au](mailto:account@pws.wa.edu.au) to your safe sender list. If you need assistance with this, please contact reception. Thank you.

# GENERAL NEWS

## **SPECIAL MESSAGE FROM ADMIN**

Perth Waldorf School welcomes our new Junior Admin Officer, Kyler Kissell. Kyler will join our amazing Front Office team and you will see her around the school. Kyler will be taking over for Avalon who has been filling in in the office. Avalon will be leaving us to go overseas before she continues on to university next year. We farewell and thank Avalon for all her hard work and support down in the Front Office, you will be greatly missed!

If you are coming past the Front Office please come in and welcome our new junior. Kyler can be contacted via email: [frontoffice@pws.wa.edu.au](mailto:frontoffice@pws.wa.edu.au). We wish Kyler all the best in her new role!



# FROM COMMUNITY SUPPORT

## **USE OF MOBILE PHONES BY ADULTS IN OUR COMMUNITY**

The other day, as I was walking towards the front entrance of our school, I was surprised to see a mother driving out whilst on her phone with a young child in the car! This brought home the realisation that, although we are generally more aware in our community, we are still at risk of not being conscious about our actions.



For the sake of our children PLEASE only use your mobile phone when it's safe to do so, and be aware that the more time we spend actively being present for our children, friends and family, the healthier our social life becomes. Do we need to use our phones as much as we do? We are important role models for our children and the school's expectation is that mobile phone use will be kept to a minimum. People using their phone may be asked to put it away.

Thank you for your co-operation.

**Simone Finlay - Community Support**

## DONATIONS FOR MADU STEINER SCHOOL

### CAN YOU DONATE STEINER/WOODEN TOYS

your kids have outgrown?

We would like to re-sell quality pre-loved toys and books and raise funds to support the Madu Steiner School in Ubud and provide them with items such as Waldorf quality wool, color chalks or water colors.

Can you please bring your donations to Jana, Simone or to the collection box in front of the reception. No plastic toys, please.

*Demi, the teacher who visited us last year, started Class 1 in February with 9 children. She was very grateful for all the experience and inspiration she received in our school, but also indicated how tough, or rather impossible, it is to get some resources used by Steiner schools in Bali.*

Your contribution is much appreciated!



Jana Kucerova - Community Support

## EARLY CHILDHOOD

Perth Waldorf School is pleased to present:

*Parent talks on Childhood Development with Susan Laing.*

### Understanding child development in the early years.

**Monday, 1<sup>st</sup> April, 9:00am to 10:30am, Seekers Place.**

Development in children is not incremental. It happens in bursts, with steps forward and steps backward, with quiet, easy times, but also with boastful, vigorous and other challenging times, that can bamboozle the parent brain! However, there are patterns in this development which reveal there is an order in this unpredictability. These patterns can guide us in how to support our children in the ways they need. This talk will introduce you to this source of help.

### Meeting the challenges in nurturing young children

**Monday, 1<sup>st</sup> April, 6:30pm to 8:00pm, Seekers Place.**

Parenting was never easy but this stressful, technological world is creating new challenges in how to provide an environment for the healthy development of young children. Commercialism and misinformed peer pressure, however well meaning, may influence our decisions unless we use our understanding of how young children develop and their basic needs as the foundation for our parenting. Being well informed makes it easier to stand firm courageously in our strategies and decisions to provide them with the healthiest start to life we can manage. This talk explores these challenges.



# PRIMARY SCHOOL

## FROM THE COORDINATOR

Dear Parents,

Please could we ask that you use the Class 1 and 2 play area for you younger children during our primary school class time and keep them away from the oval and play equipment when classes are out at morning tea time (10:50am to 11:15am) and again at lunch time (12:50pm to 1:30pm).

Please would you also ensure that the children play quietly and do not bang on the hall doors during school as it does cause a disturbance to the Eurythmy and drama lessons.

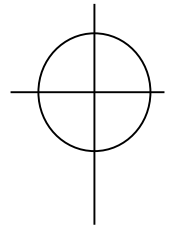
Thank you kindly,

**Lisa Payne - Primary School Coordinator**

## EASTER CROSSES

Easter is coming and so is Little Donkey! So we need our basic Easter crosses ready for decoration by **Monday, 1<sup>st</sup> April**. For our new students a basic cross needs to be made using the pattern below and returned to school by this date.

The Cross is to be constructed using dowel approx. 12mm in diameter; the vertical piece is to be 72cm long and the horizontal piece 45cm long. The dowel should "cross" 22cm from the top of the vertical and be wrapped with wool or wire to stay together. Take some thick wire and make a circle around the cross with a 20cm radius from the crossover section. To make it easier to attach the Easter Roosters, attach a long nail to the top of the cross.



ALL Crosses are to be brought to school by **Monday, 1<sup>st</sup> April, 2019**.



## CLASS 3 REQUEST

Class 3 are looking for a 9 month loan of an upright tied worm farm for their gardening main lesson/studies for the year. Please see Judith the Class 3 Teacher or leave a message at the front office if you think you can help.

## CLASS 7 MEDIEVAL MORNING

They came in cars, not carts, but the members of The Grey Company who arrived at school last Sunday looked as if they had been transported from the Middle Ages to our own modern one. They came to teach young serfs, squires, lords, ladies and nuns the forgotten arts of medieval life.

Intricate chain mail was linked, runes carved into leather, heavy armour donned, flint used to start a fire and crossbows fired at targets. Then the two Class 7s entertained the crowd with medieval music, poetry and drama. The grand finale saw a number of extremely realistic battles enacted. The high humidity was testing for the audience that sat watching.... in the cool shade! Heaven only knows how the fighters in their chain mail and in full sun coped, as they threw themselves into their fighting.

We would all like to extend a huge Thank You to Paul, Cheryl and the dedicated volunteers of The Grey Company. They shared their knowledge with such enthusiasm, generosity and good humour that it made this event truly one to remember. Enjoy the photos!

**Kevin Mazzer and Trish Crook - Class 7 Kulbardi and Wardong Teachers**

## THOUGHTS FROM CLASS 7, WARDONG, ON THE MEDIEVAL ENCOUNTER!

On the day we ventured back  
Back to the Age of Battles,  
Walked down an ancient track,  
To where chaos crackles,  
In a fire long since extinguished,  
It was intense in its power  
A power that caused all to fight and rage  
To begin to flower.  
It was interesting and exciting  
How the Knights battled with seemingly no  
cause  
Just to entertain and not to be bores.  
I cannot imagine just what it could be like  
If every Sunday morning, I could be Knight!

**Mary-Jane**

My favourite activity was the sword fighting.  
It was an amazingly intense show. I happily  
enjoyed it. I also liked the Kulbardi play. It  
was very professional.  
Trying on armour was great fun and  
interesting. It was heavy and I found it hard  
to believe that the medieval warriors were able  
to wear it in battle.

**Milan**

I liked making fire out of flint and steel. The  
fighting was spectacular and the play of Death  
was great!.

**Isaiah**

I picked up my sword and shield  
And went on the battle field  
Roared like a lion at my enemy  
And used my shield  
I lost the battle sadly  
And shouted my battle cry  
In hope of knowing  
I had my try!

**Leilani**

The last battle meant a lot to me.  
I couldn't believe what I could see.  
There was death, weapons, costumes and more  
What else could I ever wish for?  
It was just like a play  
But even better  
These people have a passion as great as it gets  
I'd love to be a part of this.....a new passion,  
let's!

**Olivia**





I loved the Kulbardi's play. It was funny. Everyone did so well. I don't think they made any mistakes. If they did, they covered it up very well.  
A big congratulations to the class.

#### **Fraya**

I liked being taught how to link chain mail and making a fire with flint and steel.  
We burnt charcloth and fibre. Making fire was hard, to even get enough spark to set alight the fibre and cloth. Making chainmail was hard also but once you got the hang of it, it was easy.

#### **Keith**

On Sunday, March 10<sup>th</sup> the Grey Company came to our school. We began the morning with activities and then we put on a little show.  
After that the Grey Company put on a fighting display which was great! Sometimes, they fought one on one and then they formed teams.  
It was very realistic and extremely interesting to watch.

#### **Amelia**

The fight on the Medieval morning was a sight to behold  
The battle was all practised and planned or so we were told  
It was fierce, it was fascinating  
The knights enjoyed themselves thoroughly  
The audience watched as the knights used their wit to portray the scene perfectly!

#### **Holly**

We had a medieval morning when the grey Company came and showed us some medieval activities. My favourite part was the fighting when they all had a country team like the Saxons, Crusaders and the Turks.  
They started fighting and had a big battle. A lady who was a Turk won! It was very interesting and I loved it.

#### **Georgia**

I really enjoyed the Kulbardi play. The people who acted really had their hearts in it. Their improvisation with the poison was good!

#### **Juniper**

I enjoyed the armoury workshop. The helmets, sword and chain mail were all fascinating.  
I love learning new things like the Medieval Ages traditions, Art and Warfare.  
Taking a step back in time to see what it was like is just great!

#### **April**

I liked the chainmail making. It proved how long it would take to make a full suit of armour with wire and plyers. Chainmail is very heavy. It's like having boundaries on your shoulders. It would be tiring running up and down a hill in battle.

#### **Yilu**



## Connect Learning WA Before and After School Care

Connect Learning is available all year round if you ever need last minute care. Feel free to pop in for a chat with Nicola (in the Craft/German Room before and after school).

<b>Before School Care</b>	<b>6:30am to 8:25am</b>
<b>After School Care</b>	<b>2:00pm to 6:00pm</b>
<b>Vacation Care</b>	<b>6:30am to 6:00pm</b>
<b>Early Finish Thursdays</b>	<b>2:30pm to 6:00pm</b>
<b>Pupil Free Days</b>	<b>6:30am to 6:00pm</b>

\*The service is only available to Primary aged children.\*

## Bush Wisdom at Connect

On the 5th of March we had the pleasure of Bush Wisdom visiting us at Connect. Vanessa helped us to build our knowledge about reptiles and in doing so we shed our fears.

We now know how to behave safely around reptiles, when or who to call if wildlife is in danger or injured, correct care and handling for relocating lizards and first aid management of snake bites. We even had the opportunity to interact with live reptiles which was incredible. Now we can enjoy the outdoors with more love and understanding of our native wildlife.

If you would like to book a place at Connect for before, after or vacation care please contact us today at [info@connectlearningwa.com.au](mailto:info@connectlearningwa.com.au) we do take one off bookings if you get stuck for care.



## HIGH SCHOOL

### CLASS 10 PLAY - THIS WEEK!

Class 10 will be taking to the stage to perform in the awe inspiring magical play Grimm Tales, adapted for the stage by Philip Wilson.

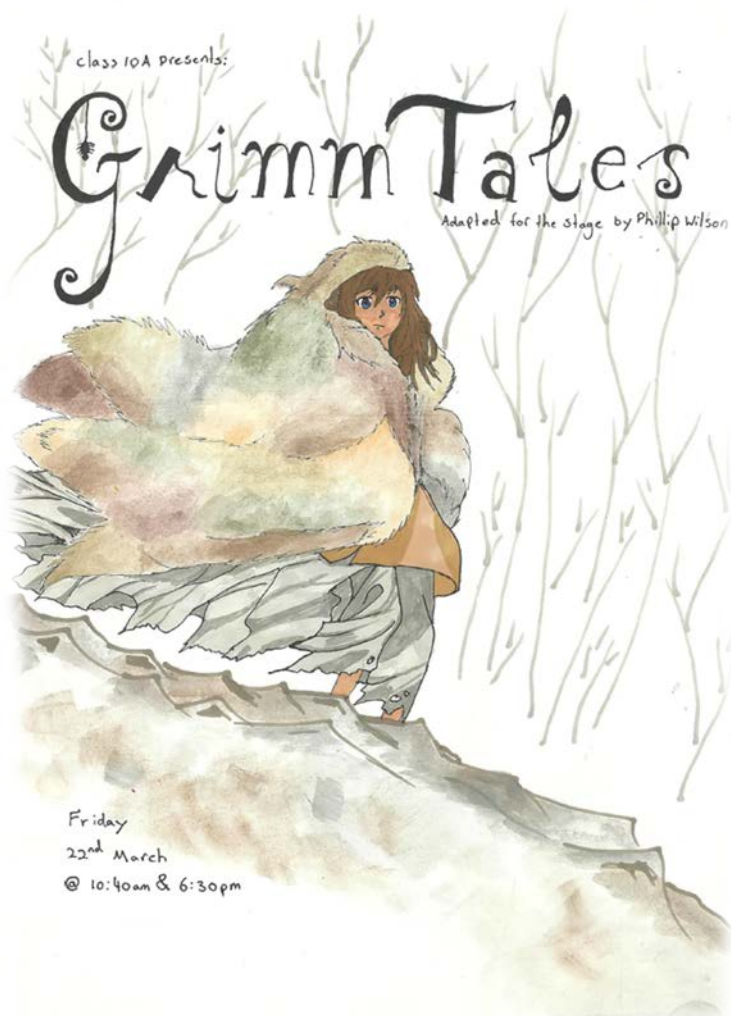
Full of deliciously dark twists and turns, the tales come to life in all their glittering, macabre brilliance a delight for children and adults alike. You'll meet familiar characters such as the Juniper Bird, Thousandfurs and Hansel and Gretel.

Join us in Williams Hall on **Friday, 22<sup>nd</sup> March at 10:40am and 6:30pm.**

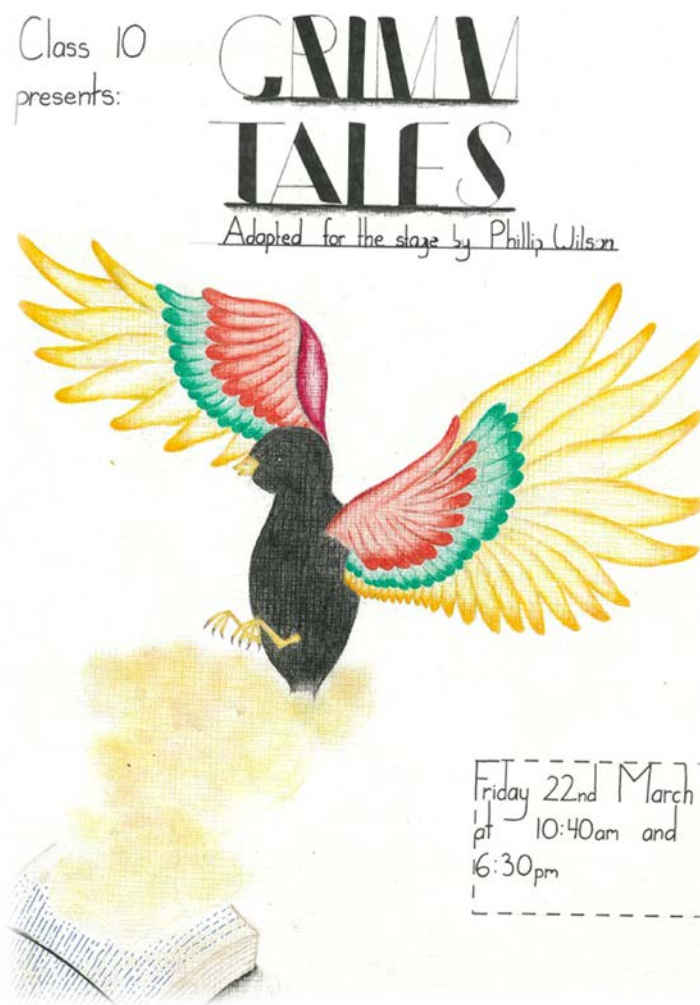
We hope to see you there!

Please see posters over the next page...





*Poster created by Evangeline Cassey*



*Poster created by Madeleine Harvey*

## LIBRARY NEWS

Many thanks to Titus Witsenberg for creating and placing a wooden board at the end of one of our library shelves. It's just perfect! The library space now looks so much more beautiful, calm and inspired. Thank you Titus for your woodcraft.





### Books of the week

***Raised by our childhood voices, one father's journey to raise confident, connected, compassionate boys*** by Darrell Brown. Darrell has woven in heartfelt stories from his own life to inspire fathers on their journey be their sons 'best bet' in life.

***Queen Bees and Wannabes, helping your daughter survive cliques, gossip, boyfriends and other realities of adolescence*** by Rosalind Wiseman. Your daughter's friendships are the key to surviving adolescence but also the biggest threat to her happiness. In this internationally bestselling book Rosalind Wiseman cracks the 'girl code'.

***Your child's emotional needs, what they are and how to meet them*** by Dr Vicky Flory. In this groundbreaking book, Dr Vicky Flory explores the emotional needs of children from birth to age 12, explaining what all children need in terms of a secure attachment to a parent, as well as detailing the specific needs at particular stages in a child's development.



Penny Champ and Kelly Geyer - our beautiful Librarians

## MAINTENANCE & GARDENING



We are a waste wise school!

We recycle what we use,  
separate things and you should too!

Glass, paper, plastic and tin,  
go in your RECYCLING BIN!

We must start now, we can't wait,  
quick or it will be too late!



Students are to refrain from bringing mobiles or electronic devices into school, unless permitted by their parents and class guardian. Devices brought to school are to be switched off and kept in school bags until the end of school.

## P & F

### 'THE CARRIAGE' SCHOOL SHOP



### TUESDAY MORNING VOLUNTEER NEEDED!

#### OPENING TIMES:

Tuesday and Thursday from 8:15am-9:15am, and Wednesday from 2:30pm-3:30pm.

We stock all your school stationery supplies, uniforms & bags.

We also have a large range of craft supplies, jewellery, knitted items, cleaning products, salt lamps, essential oil holders, amber teething necklaces, wooden toys and books.

### **RIDE2SCHOOL DAY**

As part of Bike Week WA, the Parents and Friends Association is hosting a **Ride to School Breakfast on Friday, 22<sup>nd</sup> March.**

Breakfast will be provided from **8:00am in the Plaza** for students whom have ridden their bikes or walked to school, and the canteen will be open. We are seeking several parent helpers to prepare or serve breakfast, or make muffins - please contact Tracey (**0414 813 044**) or Simone (**0406 897 469**) if you can help.



Start the day in a healthy way - get on your bike!

### **2019 SPRING BULB FUNDRAISER**

Order forms for WA company 'Tulips with a Difference' have been distributed to classes (they may be in your child's bag!). This is a great fundraiser for our school - we keep 30% of funds raised - with the added bonus of colour and beauty in our gardens! Neighbours and extended family may be interested in ordering bulbs as well.

**Completed order forms are due by Wednesday, 20<sup>th</sup> March.** Please drop off forms at the school office reception - contact me if you have any queries (**0406 897 469**).

**Simone Finlay - P&F and Community Support**



***Fundraising With  
Garden Bulbs & Gifts***

**Perth Waldorf School P & F**

**Premium Quality WA supplied Bulbs & Gifts  
From Tulips With A Difference**



**Order Forms Available From School Office or**

**Co-ordinator - Simone Finlay 0406 897 469**

**SUPPORT YOUR COMMUNITY & SAVE**

### **EASTER MARKETS - Tuesday, 9<sup>th</sup> April.**

After the beautiful and reverent Palm Walk, come and browse through the Easter Markets, open from 9:00am to 1:00pm. There will be a variety of stalls selling handmade or natural items, including crafts, precious stones, jewellery, used toys, and the canteen will be open. Come along and enjoy the festive atmosphere!





# COMMUNITY CLASSES

## Groups/Classes

Participating in any of these activities goes towards Family Participation Hours.

*These groups for parents are run or led by teachers or parents. Members of the school community are encouraged to join any of the groups and enjoy the experience of personal growth and learning in this beautiful environment - a great inspiration for our children!*

Mondays, 9:00am-10:15am	<b>Parents and Friends Study Group</b> with Anne Williams (in the Library, no children please) <b>0424 771 217</b> .
Mondays, 10:30am-12:00pm (fortnightly) <b>25/03</b>	<b>Biodynamic Group</b> with Heidi Halter (see below for details).
Tuesdays, 9:00am	<b>Craft Group</b> with Pixie Stott (outside the Canteen).
Tuesdays, 2:15pm-3:00pm	<b>Eurythmy</b> with Kristina Hamilton (in Williams Hall).
Wednesdays 9:00am	<b>Adult Singing</b> Come and join Claire Williamson and discover your inner voice (in the Music Office)
Thursdays, 9:00am-9:45am	<b>Listening Circle</b> with Bruce Lee - the Administrator (in the Library). Come in for a conversation, concern, query or just to listen.
Saturdays, 1:00pm-4:00pm	<b>Waldorf Wood Workers</b> with Christian Geyer (meet in Plaza) <b>0409 267 178</b> .

**BIODYNAMIC GROUP** - with Heidi Halter.

**Mondays (fortnightly), 10:30am-12:00pm, in the Kindy 4 garden.**

Please join us on **Monday, 25<sup>th</sup> March** for our next Biodynamic activity. We will be preparing the essential light and warmth spray biodynamic 501. We start at 10:30am in the kindy 4 garden and will be finished by 12:00pm. A gold coin donation is appreciated. Children are welcome, no gardening experience is necessary.

For more information please call Heidi on **0427 445 754**.

**CRAFT GROUP** - with Pixie Stott.

**Tuesdays, 2:15pm-3:00pm, outside the Canteen.**

Welcome new and continuing parents and carers! Come along and join Pixie and parents in sewing felt rabbits and mice for the Easter market - they're rather adorable. Every Tuesday morning from 9:00am to 11:00am.



## SCHOOL NOTICES



School notices are strictly for members of the school only and may consist of: lost and found items, items for sale (student/school related), and classes/lessons within the school, etc. Please restrict your notice to three lines (this is free of charge). School notices will appear in this section for two weeks. If you would like the ad to appear for longer, please contact the Pabulum on 9417 3638 each week. Thank you.

**LOST VIOLA** - from outside Class 5 on Friday, 15<sup>th</sup> March. If found please return to Class 5 or call Catherine on **0417 116 475**.

**TWO VIOLINS FOR SALE** - one quarter size and one half size. Also one Suzuki flute. Both items have music books. \$80 for each violin. \$120 for the flute. Contact Jana **0424 306 153**.

**FOR SALE: CELLO** - Full size Eberhard Meinel quality student cello with almost new bow and soft case. Made in German Democratic Republic. Very good condition - \$650.00. Phone Rebecca on **0435 084 890**.

**WET SUIT FOR SALE - long arms & legs** - Ozmosis brand - boy size 12, perfect for Class 7 sailing camp! Hardly used. Bought new \$100 - sell for \$50. We live 5 mins from school. Contact: [Shaz.hutchison@bigpond.com](mailto:Shaz.hutchison@bigpond.com), ph/text **0400 248 895**.

**VIOLINS FOR SALE** - ½ size - **2 available** - PRICES REDUCED! 1 in excellent condition \$150; 1 in fair condition \$120. We live 5 mins from school. Contact: [Shaz.hutchison@bigpond.com](mailto:Shaz.hutchison@bigpond.com), ph/text **0400 248 895**.

## Rudolf Steiner College Perth 2019

**Celebrating The Human Being**  
Tone and Speech Eurythmy  
with Paries Orange

Saturday  
Feb 24th  
8.30 - 3.30

**Introducing Anthroposophy**  
with Paul Lawrence, Nicole Lawrence

3 Saturdays  
March 9th, 16th, 23rd  
8.30 - 1.00

**Life Mapping Module One**  
with Dale Irving

5 Tuesdays  
from March 12th  
7.00 - 8.30

**Patterns in Child Development**  
with Susan Laing

Saturday  
March 30th  
8.30 - 12.30

**Life Mapping Module Two**  
with Dale Irving

5 Tuesdays  
from April 30th  
7.00 - 8.30

**A Journey of Becoming**  
Modules One and Two  
with Dr. Lakshmi Prasanna  
and Paries Orange

July 15th - 19th  
5 day intensive  
8.30 - 5.00

**Life Mapping Module One**  
with Dale Irving  
At Silver Tree Steiner School

5 Tuesdays  
from July 30th  
7.00 - 8.30

**Play and Child Observation**  
with Renate Breipohl

2 Saturdays  
August 24th, 31st  
times to be confirmed

**The Four Temperaments**  
with Jill Whitfield and Sharon Clifford

September  
dates to be confirmed

**The Evolution of Consciousness**  
through the Visual Arts  
Anthony MacLeod

To be confirmed

For more details visit <https://www.rudolfsteinercollege.com.au>  
or contact Jenny Hill [jennyhill@iinet.net.au](mailto:jennyhill@iinet.net.au)  
or Ann Reeves [annreeves@iinet.net.au](mailto:annreeves@iinet.net.au)

Rudolf Steiner College Perth presents

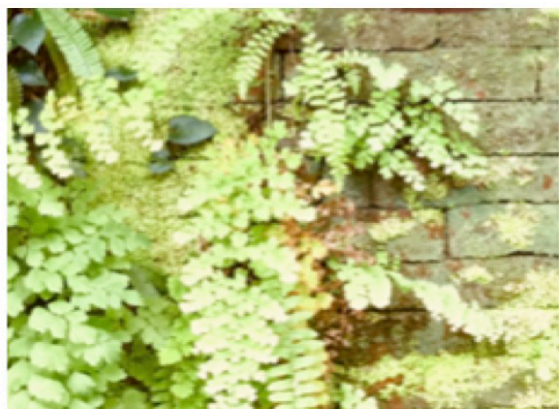
# INTRODUCING ANTHROPOSOLOGY

**A three day course exploring the  
philosophy behind Waldorf Education  
and Rudolf Steiner's worldwide impulse**

with Paul Lawrence, Nicole Lawrence  
and Kristina Hamilton

**9th, 16th + 23rd March, 8:30am - 1pm**  
**Perth Waldorf School, Gwilliam Dr., Bibra Lake**

Cost \$225 - Concession \$200  
Enrolment Jenny Hill [jennyhill@iinet.net.au](mailto:jennyhill@iinet.net.au)  
Information Paul Lawrence [plawrence@pws.wa.edu.au](mailto:plawrence@pws.wa.edu.au)



## Introducing Anthroposophy

What is the Human Being? Who are we?

Rudolf Steiner's insights create a multi-layered picture that open our minds and hearts to a richer understanding of these questions.

A two-fold approach explores the physical and the spiritual natures of the human being, sleeping and waking, breathing in and

breathing out, sympathy and antipathy.

Expanding into a three-fold approach we explore the middle way between polarities: body, soul and spirit; thinking, feeling and willing; head, heart and hands.

In the four-fold human being we come to the physical, etheric, astral and ego bodies and see how these are expressed in the mineral, plant, animal and human kingdoms, the four elements and the four temperaments.

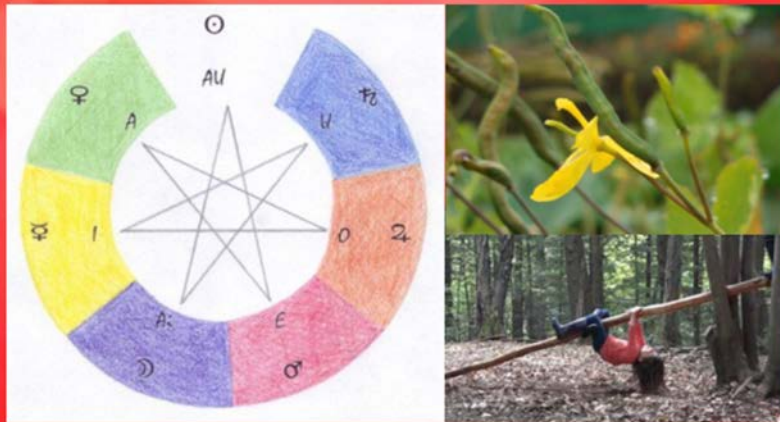
This is a wonderful opportunity to experience an artistic introduction to Anthroposophy including painting, sculpture, music and eurythmy.

Tutors: Paul Lawrence, Nicole Lawrence and Kristina Hamilton



# Patterns in child development

Steiner's insights and cycles of growth  
reflecting planetary qualities in the early years



with  
**Susan Laing**

**Saturday 30th March**  
**8.30 - 12.30pm**

**\$80 \$60 concession**

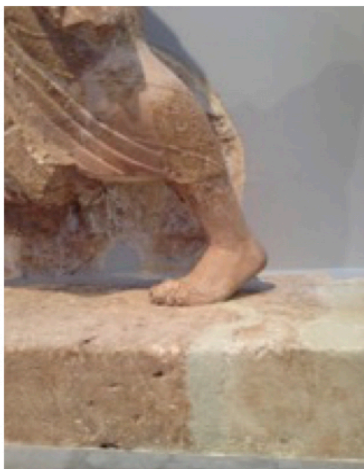
Perth Waldorf School, Gwilliam Drive, Bibra Lake

For more details contact Jenny Hill [jennyhill@iinet.net.au](mailto:jennyhill@iinet.net.au)  
[www.rudolfsteinercollege.com.au](http://www.rudolfsteinercollege.com.au)

Rudolf Steiner College Perth

## Biography Work

### MODULE 2: FREEDOM OR FATE



*The personal chart can become a precious lifetime possession. By yearly updating we can sustain our awakening recognition of destiny in motion. Through this inner process we gain a more mature, tolerant and compassionate in-look on destiny, both ours and others.*  
(Bryant, W. A. A Journey through Time, 2006).

**Biography Work through Destiny Learning** allows a way to look at life patterns, rhythms, mirroring, destiny moments in a holistic way using the chart as the guide that expands and deepens over time. Deep listening, helping conversations, writing and gesture work will provide ways to be heard and to listen and share our becoming human.

**Where** Seekers Room. Perth Waldorf School  
Gwilliam Drive, Bibra Lake  
**When** Tuesday 30th April - 28th May 7 - 8.30pm  
**Booking** Dale Irving [docirvo7@bigpond.com](mailto:docirvo7@bigpond.com)  
0400959050



# COMMUNITY NOTICES



Community Notices are for members of the school's community only and may consist of; business adverts, producers, services, items for sale (non-school related), etc. keeping in mind that they need to be consistent within our schools' ethos. Please restrict your notice to three lines (this is free of charge). All Community Notices will appear in this section for two weeks only. If you would like a ¼ page advert, a \$10 fee is required and will only appear in Week 2 and Week 8.

**SWEET LITTLE SOULS MERINO BABY CLOTHES BUNDLE** - 20+ items all size 1 (62/68) in excellent/very good used condition, incl. jumpers (1 new), beanies and winter sleeping bag - \$200. Please text Annabelle **0431 320 347**.

**RENTAL AVAILABLE** - Available now 4x2 home in Munster, solar power, mango trees, grape vine. Lots of space. \$420pw neg. <https://m.realestate.com.au/property-house-wa-munster-424610506>

**ESSENTIAL OILS 101 CLASS** - Your introduction to the world's best essential oils. It's totally free and together we will learn how to kick chemicals to the curb and be pampered in the process. Saturday, 23<sup>rd</sup> March, 1:30pm til 3:00pm in Bibra Lake. To book Ph. April **0413 159 815**.

**HOUSE FOR RENT** - 4x2 home with office available for rent in the nearby suburb of Yangebup (4kms) \$400pw. Separate lounge and living area. Reverse cycle ducted aircon, wood fire, gas heating and hot water, dishwasher, recently painted. 3 sheds and a carport. Awesome landlords, pets allowed. Available around the 6th April. Please call Tracey Robertson **0434 953 516**.

**ALANA ROBINS, FLOWER ESSENCE SPECIALIST** - Offering flower essences and gem elixirs for the wellbeing of women, children and families. Special price of \$65 for PWS families. Phone **0407 570 950**.



## PIXIE STOTT CANTEEN

Canteen Open times:

**Mon and Fri, 8:10am-2:00pm.**

**Tues and Wed 8:10am-2:00pm. After school 3:00pm-3:15pm.**

**Thurs 8:10am-1:30pm. After school 2:10pm-2:30pm.**

**All Primary school students must order before school for morning tea and lunch.**

As the school grows all Students, Staff and Parents are encouraged to order and avoid disappointment. Standing orders can be placed also.

The school canteen is run as a not-for-profit by the Parents and Friends Association (P&F). Volunteers are always warmly welcome in the Canteen - please speak with Megan about how you can help. Time goes toward Family Participation hours. Hair covering and closed in shoes are a must.

Any donations of pre loved kitchen equipment or any excess home grown fruit and vegetables are greatly received. Now available:

- Bannister Downs milk full cream and lite \$2.00/Litre.
- Local Raw Honey \$7.50 500g jar or bring your own jar \$12/kg.
- Organic Olive or Sunflower oil \$15/litre bring your own bottle to refill.
- Tammys' Sourdough bread is available Monday, Wednesday and Friday.
- Breadtime stories sourdough available Tuesday and Thursday (preorder to avoid disappointment).
- Organic eggs \$8.50 per dozen.

**See Menu for Term 1 in last week's Pabulum.**