



# Pabulum

Perth Waldorf School

14 Gwilliam Drive,

Bibra Lake WA 6163

Telephone: 9417 3638

Email: adminpws@pws.wa.edu.au

Website: www.pws.wa.edu.au

## TERM 3 CALENDAR

### SEPTEMBER

Wed 25 Michael Festival

Thur 26 Michael Festival  
Primary Assembly

Thur 26 Class 8B Play 'A Feast  
of Shakespeare' -  
9:00am and 6:30pm

Thur 26 LAST DAY OF TERM 3

### THIS WEEK

#### MICHAEL FESTIVAL

Wednesday 25<sup>th</sup> September



#### LAST DAY OF TERM 3

Thursday, 26<sup>th</sup> September

### NEXT TERM

Digital Parenting and Cyber Safety Talk  
in Williams Hall

Tuesday, 22<sup>nd</sup> October - 6:30pm

### TERM DATES

Term 4: Monday, 14<sup>th</sup> October -  
Thursday, 17<sup>th</sup> December (half day).

#### STUDENT ABSENCES:

\*Please let the office know by 8:30am.\*

Text: 0429 680 969, Phone: 9417 3638,

Email: absence@pws.wa.edu.au,

#### PABULUM INFORMATION:

- Pabulum contributions need to be emailed to pabulum@pws.wa.edu.au by 2:15pm Thursdays.
- To view Pabulum as a PDF, go to www.pws.wa.edu.au
- To receive the link via email, please send a request to adminpws@pws.wa.edu.au

## Term 3, Week 10

Tuesday, 24<sup>th</sup> September, 2019

### WA STEINER SCHOOLS' DAY

This Friday, staff from all seven Steiner schools will be gathering at West Coast Steiner School in Nollamara for our annual gathering. The purpose of the day is to:

- Celebrate Steiner Education and the work everyone does,
- Hear from a Guest Speaker and be enlivened with various workshops and
- Network with each other, especially the people who do similar tasks in other schools.

### UNIQUE SCHOOLS CLOSELY LINKED

The Seven Steiner Schools in WA, from Geraldton to Denmark, are closely linked through the curriculum and the picture of the human being (Anthroposophy) that underpins the curriculum. Each school however has its own flair and style, history and structure. Most unique and what you would pick up on very quickly in a Steiner school is the culture that lives in the school. The culture is mainly carried by the teachers through their regular faculty and College meetings and how they deliver the curriculum and relate with the unique children before them. We learn and grow through our interaction with others and through knowing the other via observation and wonder. This is an important task of a teacher. So a school in southern Denmark is going to feel and have a culture very different to a school in Gero. The place is different, the people are different and if we are relating in an authentic way, the school will feel unique unto itself despite the curriculum uniting us.

### WALDORF 100

Last Thursday, the world celebrated the anniversary of 100 Years of Waldorf education. The first school started in Stuttgart, Germany on 9/9/1919. This site has lots of information and video clips celebrating the 100 year anniversary.

<https://www.waldorf-100.org/en/>

### WALDORF 100 at PWS

An acknowledgement of the Whadjuk country and the Elders past and present, a specially composed song and a simple meal was how staff and alumni marked the occasion last Thursday evening. It was also acknowledged in classes throughout the school, in some cases with scones and honey at recess time.

Why honey? Bees are a core theme of Waldorf 100. Bees, these creatures of the sun, help many of our food crops to multiply, and at the same time show us the state of our souls: "The entire beehive is actually permeated with love life" observed Rudolf Steiner. Bees are an image of the spiritual power that lends dignity to freedom: for the power of love that wants to become effective. "When bees do well, humans do too."

The Michael Festival is a fantastic way of seeing the Primary Children working together and celebrating spring. Parents and Grandparents are welcome to help volunteer or sit and enjoy the festivities on the school field on Wednesday afternoon.

Have a lovely spring break with your children over the holidays.

Bruce Lee  
School Administrator

### IN THE LIGHT OF A CHILD

*The beauty of all things, radiant and fair,  
How it pours through my heart; how it fills me with gladness!  
In the people I meet this same beauty is there;  
It reflects in their eyes, both in joy and in sadness.*

*And when our eyes sparkle or twinkle or shine,  
When warm love is flowing in the way that we live,  
Then the water of life in ourselves becomes wine.  
And to God this can be the great gift that we give.*

Michael Hedley Burton

# FROM FINANCE

**SCHOOL FEES - Term 4 Due Date: Friday, 25<sup>th</sup> October, 2019.**

CREDIT CARD/ONLINE PAYMENT	ELECTRONIC FUNDS TRANSFER	CHEQUE AND CASH
Payments by Credit Card can be made by visiting the Bpoint website: <b><a href="https://www.bpoint.com.au">https://www.bpoint.com.au</a></b>  Biller Code: 147 2133 Reference: Family Code  Phone payments can also be made by calling Reception on <b>9417 3638</b> during Office Hours.  We accept VISA and MASTERCARD.	Payments by Electronic Funds Transfer (EFT) can be made to the school's banking details as follows:  Account Name: Perth Waldorf School BSB: 066 000 Account Number: 1205 1015 Commonwealth Bank Perth  Reference: Family Code	Payments by cheque can be made payable to Perth Waldorf School. Please have a copy of your statement attached when mailing your cheque.  Postal Address: PO Box 1247, Bibra Lake WA 6965  Cheques and Cash Payments can also be made during office hours at the School Reception.  EFTPOS terminal also available.

**A late payment fee will apply to all accounts not paid by the due date. This does not apply if you have a payment plan arrangement in place.**

## **UNREFERENCED PAYMENT**

Our Finance Dept. received an unknown payment for school fees with the following details:

**School Fee payment - 2<sup>nd</sup> September, 2019 - \$1500**

If you think this transaction was made by you please contact the Finance Department on **9417 3638** or by emailing **[account@pws.wa.edu.au](mailto:account@pws.wa.edu.au)**.

## **TERM 4 INVOICES**

Term 4 fees have now been emailed out to all families. Fees are due to be paid on **Friday, 25<sup>th</sup> October, 2019**. If you have not received your invoice please contact Leisa Clarke in the finance department on **9417 3638** or **[account@pws.wa.edu.au](mailto:account@pws.wa.edu.au)**.

To assist with timely delivery of your invoices, please add our email address **[account@pws.wa.edu.au](mailto:account@pws.wa.edu.au)** to your safe sender list. If you need assistance with this, please contact reception.

Thank you.

**Finance Team**

# GENERAL NEWS

## **SCHOOL HOLIDAYS**

**Thursday, 26<sup>th</sup> September** is the last day of Term 3. School will recommence in Term 4 on **Monday, 14<sup>th</sup> October**.

Our holiday office hours are:

**Monday to Friday, 9:00am-3:00pm.**

The office will be closed on:

**Friday, 27<sup>th</sup> September.**

**Monday, 30<sup>th</sup> September (PUBLIC HOLIDAY).**

**Monday, 7<sup>th</sup> October.**

## **TERM DATES**

**Term 4:** Monday, 14<sup>th</sup> October - Thursday, 17<sup>th</sup> December (half day).

## **2020 TERM DATES**

**Term 1:** Tuesday, 4<sup>th</sup> February - Thursday, 9<sup>th</sup> April.

**Term 2:** Tuesday, 28<sup>th</sup> April - Friday, 26<sup>th</sup> June.

**Term 3:** Monday, 20<sup>th</sup> July - Thursday, 24<sup>th</sup> September.

**Term 4:** Monday, 12<sup>th</sup> October - Wednesday, 16<sup>th</sup> December.



## MICHAEL FESTIVAL - tomorrow!

Our celebration of the Michael Festival by our Primary School is **TOMORROW** on **Wednesday, 25<sup>th</sup> September** from **12:10pm** on the Small Oval, then **12:30pm-3:00pm** on the Large Oval.

If you would like to offer help on the day please text Sarah Boyle on **0414 827 787** or contact your Class Carer. If you are able to make Anzacs please inform your Class Carer. **THANK YOU!** We look forward to seeing you there!

The Michael Festival is above all a festival of will; a festival to awaken consciousness of the struggle between Michael and the Dragon. The legendary picture of Michael fighting the dragon provides us with hope and inspiration in overcoming the limitations of our own lower natures. Through courage and steadfastness in spiritual striving; through inner work and outer deeds which resolve on the good, we can support the work of Michael in freedom. Our thoughts and deeds have consequences which help or hinder the work of Michael in the Spiritual World.



This is the time when active help by you, parents, is needed and gratefully accepted by the co-ordinator of this day, Sarah Boyle, and indeed the whole teaching staff. There are several ways in which you can help:

1. **SET UP TEAM** - a minimum of **5 parents** are needed at **8:45am** on the day - this should take about an hour. Please meet Sarah at the Canteen. Coffee provided after set up!
2. **GAME HELPERS** - **5 parents for each primary class** are needed to ensure the activities and children are properly supported. Please meet in the Plaza at **11:30am** for instructions, tea and coffee!
3. **ANZAC BISCUITS** - **each Primary and High School class needs at least 60 Anzac biscuits baked**. Could Primary families deliver biscuits on the day to the table next to the Canteen blackboard in a sealed container (to protect from the crows!); High School biscuits to classrooms. **The P&F provides juice for all students.**

**PARENT VOLUNTEERS ARE URGENTLY NEEDED TO MAKE THIS A SUCCESSFUL DAY FOR OUR CHILDREN.**

**Sarah Boyle - Festival Co-ordinator**

## SCHOOL TOUR



Our last School Tour for 2019 will be on **Tuesday, 5<sup>th</sup> November, 9:00am-10:00am**.

Come along to view our Classrooms and explore our school's grounds. This is a wonderful opportunity to get to better understand our school's ethos and meet some of our wonderful families and staff. A light morning tea will be provided with discussions after the tour.

If you are wanting to attend please contact reception (**9417 3638**) to book a place. We hope to see you there!





## POSITION VACANT

Perth Waldorf School invites applications for...

### Education Assistants in Kindergarten Commencing Term 1, 2020

Early Childhood Faculty will make two new appointments for 2020. One is for K5/6 in Jarrah Miah and one is for K5/6 in Rainbow Room. Both are one year, part time contracts.

The Education Assistant works seamlessly with the classroom teacher to provide security, safety and joy for the children as they work through their day of play-based learning.

Applicants must hold or be working towards Certificate III or IV in Education Support, and hold or be eligible for a current Working with Children Check.

A job description is available from Reception and on the school website at [www.pws.wa.edu.au](http://www.pws.wa.edu.au)

For more information about this role please contact Jennifer Byrne at [jbyrne@pws.wa.edu.au](mailto:jbyrne@pws.wa.edu.au)

Written applications including a CV should be marked 'Private & Confidential' and forwarded to:

**Administrator, Perth Waldorf School, PO Box 1247, BIBRA LAKE WA 6965, AUSTRALIA**

Or Email: [employment@pws.wa.edu.au](mailto:employment@pws.wa.edu.au)

Applications close 5.00pm on Wednesday 16<sup>th</sup> October, 2019.

## CROSSING ROAD NOTICE

Dear Children and Families,

Please read the below notice from the Children's Crossings and Safety Committee. Please take care and use the Children's Crossing in the morning. You may have to travel a little further but it is a lot safer!!



Department of  
Education



### CHILDREN'S CROSSINGS & ROAD SAFETY COMMITTEE

Review of a Type B Children's crossing

**BIBRA LAKE: Gwilliam Drive near North Lake Road**

**Location#: B622**

Please be advised that the above children's crossing is currently being reviewed by the Children's Crossings and Road Safety Committee (CC&RSC).

In order to complete the review two sets of surveys (x2 AM and x2 PM) will be conducted at the location along with a site assessment.

**Please encourage student pedestrians to utilise the facility so that a true picture of the school community's needs may be gathered.**

On completion of the review a report will be forwarded to the Children's Crossings and Road Safety Committee (CC&RSC) for their consideration and recommendations.

Yours faithfully,

**J Parson**

**On behalf of the Children's Crossings & Road Safety Committee**

18<sup>th</sup> September 2019



### FROM THE WASSAA COMMITTEE

The WA Steiner Schools Alumni Association (*Wassaa*) was officially launched and formally incorporated on 19<sup>th</sup> September, 2019 as one of the worldwide events celebrating 100 years of Steiner/Waldorf education.

A group of around 33 people, including alumni students from five WA Steiner Schools, gathered in a forum discussion on the topic of *Growing the seeds of change - The graduate Steiner community* at Perth Waldorf School.



Joan Sleight from the Executive Council of the Goetheanum, and Anthroposophy Australia's General Secretary Jan Baker-Finch, were special guests, who spoke of the worldwide support for Steiner alumni communities as 'the next phase' of fostering social change in how Steiner graduates engage with the world and its future.

They were particularly interested that *Wassaa* includes past parents, employees and volunteers as alumni, given these intrinsic roles in nurturing the growth of Steiner schools and the student journey within them.

The icing on the cake is that *Wassaa* was formally incorporated, on the same day, under the *Associations Incorporation Act 2015*.

*Wassaa* extends its thanks to all WA Steiner Schools for sowing the seeds of the *Wassaa* development; with specific thanks to the Perth Waldorf School for its financial support, as well as providing a space for the administrative needs necessary to bring the Association into being.

As 2019 graduation time draws closer, *Wassaa* will be liaising with WA Steiner schools to bring news of member benefits and events to all *Wassaa* alumni.

Thanks from the inaugural *Wassaa* Committee  
[www.wassalumni.org](http://www.wassalumni.org)

### SPECIAL THANK YOUS

A special thank you to Joan Sleight and Jan Baker-Finch for dedicating their time to share with us their anthroposophical knowledge and giving us a deeper insight into what is happening in the world of today and how Steiner education is helping the students, who are our future, to make the world a better place.

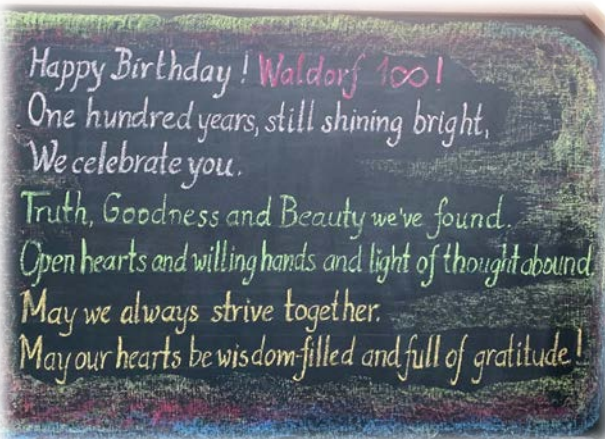
Thank you to Lei Baker and the Community Support team for making this special celebration possible, setting everything up on the day, organising the events, providing us with food and drinks and providing all the classes with scones and honey.

Thank you to Paul Lawrence, Titus Witsenburg, Peter Grayling, Julia Humphreys, Claire Williamson and David Hammond for the wonderful music performance (lyrics are pictured below).

Thank you Patricia Crook for a beautiful Acknowledgement of Country.

A very special thank you to Catherine Vann for her energy and commitment in engaging with members from all Western Australian schools to bring the Alumni Association to fruition. Catherine's work is sincerely appreciated.

Lastly we would like to thank everyone who attended our school celebration. We are truly grateful to be apart of this amazing worldwide event, celebrating 100 years of Steiner/Waldorf education!



Thanks from Perth Waldorf School





## colour blindness

Children who are colour blind can see as clearly as other people, but can't tell the difference between some colours or see colours differently from other people.

Very few people who are colour blind are 'blind' to all colours – most often they see red and green as very similar.

It's good to know if a child is colour blind because he may have difficulty at school with activities that use colours, such as drawing and sorting blocks, and with computers.

### When do children know colours?

- Very young children can see the difference between colours if they are not colour blind. They do not see colours very well at first but soon begin to like colours, especially bright colours.
- However, children under about 4 years may not understand that a green ball is the same colour as green grass. They can be confused when we use the same describing word for 2 very different things.
- Children need more understanding of things like colours, shapes and sizes to 'see' that different things can be the same colour.
- Many children are able to recognise and name colours by the time they are 4 years old.



### What is colour blindness?

In the retina at the back of the eye – the part of the eye that picks up light coming in – there are 2 types of cell, 'rod cells' and 'cone cells'.

- Rod cells work in low light but they do not 'see' colours. At night, our rod cells allow us to see things around us, but only in shades of grey and white.
- Cone cells react to daylight and they help us to see the detail in objects. They also pick up colours.
- There are 3 types of cone cells: ones that pick up red light, others green and others blue.
- ✗ By combining the messages from each set of cone cells, we get the wide range of colours that we can normally see.
- ✗ If one or more of these types of cone cells is faulty, a person can be colour blind.

### How do I know if my child is colour blind?

It can be hard to tell if children are colour blind as they won't know that they have problems with their colour vision. Some children will seem to know their colours because they've been taught that a strawberry is red and that grass is green.

If your child seems to have trouble identifying colours after the age of four, such as sorting objects by colour or colouring in, talk to your doctor or community health nurse.

### Who is colour blind?

Colour blindness is usually inherited. If you have inherited colour blindness, it won't get any better or worse.

Most people inherit colour blindness from their mother, who is a carrier but is probably not colour blind.

Around 8 in every 100 boys, but only 4 in every 1,000 girls, have some level of colour blindness.

### Why is it a problem?

- Many daily activities, such as choosing food or reading involve colour. People who can't see the difference in colour have to rely on other differences, which may be harder to pick.
- ✗ In the classroom, teachers use colour for contrast, sorting, marking, and even to provide an attractive environment. A young child with colour vision problems might have to sort coloured coded blocks by size differences alone.
- ✗ Colours are often used in print and on computer screens to highlight important words. The only way some children may know that the words are important is if the shade is slightly lighter or darker.
- ✗ It can be hard to tell if fruit is ripe, meat is properly cooked, or if the sauce is tomato or chocolate. Some foods, particularly green vegetables, can look repulsive to colour blind children.
- ✗ Pedestrians and drivers may only be able to tell red and green traffic lights apart by their position (red above green). In normal daylight this may be easy, but can be very difficult on a dark, wet night.
- ✗ There are some jobs that are hard or unsafe for people with colour blindness, such as where wiring or warning lights are colour coded.

### What you can do

- Test all the boys in your family if there is a history of colour blindness. This testing is easier to do once your child starts to know numbers (around the time that he starts school).
- If people on both sides of the family have colour vision problems, also test all the girls.
- Ophthalmologists (eye specialists) and optometrists (opticians) can test for colour vision. Some school health services and some doctors can also test children's colour vision.
- After a colour vision problem is found, your child may need more tests to tell exactly what the problem is.
- There are online sites where you can check for colour blindness, but it is best to get your child checked by a health professional.

### Helping children who are colour blind

- It usually helps children to know why they are having problems when others are able to do something easily. They may believe that they are 'stupid', when their eyes just work differently to others. Talk to your child about being colour blind, how to explain it to others, and keep supporting him at school and at home.
- Tell the school – if teachers know your child is colour blind, they can choose ways of teaching and learning that do not need him to pick colour differences.
- When your child is old enough to read, label coloured pencils and other objects so that he can choose the 'right' one. Ask his teacher to do this in the classroom too. This can help your child avoid being embarrassed or teased.
- Check out support groups and websites for colour-blind children and their families – see below.

### For more information contact

- Local school health nurse
- Local family doctor or optometrist
- Colour Blind Awareness and Support Group  
members.optusnet.com.au/~doverton
- Raising Children Network  
www.raisingchildren.net.au
- HealthyWA  
www.healthywa.wa.gov.au

This document can be made available in alternative formats on request for a person with a disability.

This publication is provided for general education and information purposes. Contact a qualified healthcare professional for any medical advice needed.

©State of Western Australia, Child and Adolescent Health Service, 2017

Produced by Child and Adolescent Community Health 2011, revised 2017 CAH-008856

## Connect Learning WA Before and After School Care

*\*The service is available for children aged from 6-12\**

**VACATION CARE** - Connect Learning is now taking bookings for the second week of school holidays (7<sup>th</sup>-11<sup>th</sup> October). Get in quick!

Casual bookings are available all year round if you ever need last minute care. Feel free to pop in for a chat with Nicola (in the Extra Lesson Room before and after school).

Before School Care	6:30am to 8:25am
After School Care	2:00pm to 6:00pm
Vacation Care	6:30am to 6:00pm
Early Finish Thursdays	2:30pm to 6:00pm
Pupil Free Days	6:30am to 6:00pm

If you are interested in your child attending please email Nicola [perthwaldorf@connectlearningafterschool.com.au](mailto:perthwaldorf@connectlearningafterschool.com.au) or call 0420 667 904.

**BOARD GAMES AND  
PYJAMAS!**

**LAST DAY  
OF TERM**

Contact Nicola for more information on  
0420 667 904 or  
[perthwaldorf@connectlearningafterschool.com.au](mailto:perthwaldorf@connectlearningafterschool.com.au)

**27TH SEPTEMBER 2019 | 6:30 AM  
-6:00PM**

Spaces are filling fast!



# PRIMARY SCHOOL

## THE GREEK OLYMPICS

How delightful to have a sunny day herald our Friday the 13<sup>th</sup> Greek Olympic Games, which was an inspiring day of striving for all participants! There were more than 90 students from six Steiner primary schools, who played with zest and enthusiasm through the day: spirits, souls, and bodies gave their very best and there were many proud beaming faces. Our warm appreciation to Silver Tree, West Coast, Helena River, Yallingup, and Golden Hill for congregating together with Perth Waldorf School students for this grand occasion.

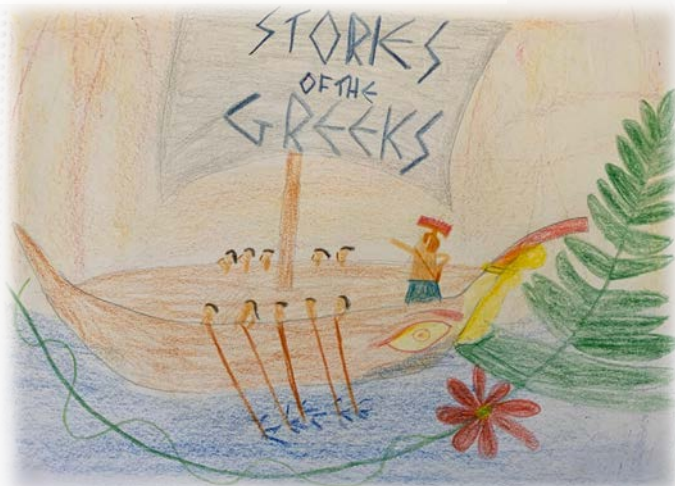
Close contests are always exciting and there were many of these, especially in the discus, wrestling, chariots, and the sprints. There was some spectacular javelin hurling, with one sailing through the air to reach even the stone embankment (where sat some thrill-seeking spectators!). Not to mention a few discuses that made it into the bush! The past-Olympians thronged to their sprint, as did the adults! We enjoyed their speed and determination.



A Greek tune lead us to the field for the games after a warm welcome from Zeus himself! A large group circle rounded off our closing ceremony, underscoring the importance of unity and inclusiveness on this sports day.

The day went seamlessly, and this is only possible through the devoted, thorough, attentive planning for months before hand, and minute by minute on the day, of a stalwart committee of Class Five parents, and the backing of all parents on the day. The teachers and students from all six schools are grateful to you for such a successful 2019 Olympics day. Thank you for your flexibility, initiative, and enthusiasm for creating such a heartening experience.

Pictured above Class 5's beautiful blackboard drawing of the Ancient Greece Main Lesson. Pictured to the left and below are some of the students artwork of 'Stories of the Greek' from their Main Lesson books for you all to enjoy.





## CLASS TWO EURYTHMY PERFORMANCE

Class Two gave a charming Eurythmy performance of the Grimm's fairytale, *Pif-Paf-Poltrie*, to an appreciative audience of parents and Class One children. I adapted this story to Eurythmy from a musical play composed and written by the team of Paul Nordoff and Clive Robbins, two extremely talented people I had the honour of meeting many years ago. Many thanks to pianist Margaret Reale who played the very engaging songs, and to Janet Wilson for her coaching on the singing.

It is the story of Pif-Paf and how he wins the hand of marriage to Fair Katie, first receiving agreement from her family: Father Hollyberry, Mother Milk-the-Cow, Brother High and Mighty, and Sister Green-Cheese. Needing to prove his profession as a "besom-binder" (a broom-maker), Pif Paf's broom is tested by having him carefully sweep up a mess of paper leaves. For me this story is a beautiful picture of how a young couple bring something new into the community - after first sweeping up the mess which we have left for them! It is a touching scene of hope for the future of humanity. The performance of Eurythmy always provides the opportunity for the higher beings of the children to shine forth. Thank you Class Two for revealing the beauty of your true selves.







Kristina Hamilton - Eurythmy Teacher

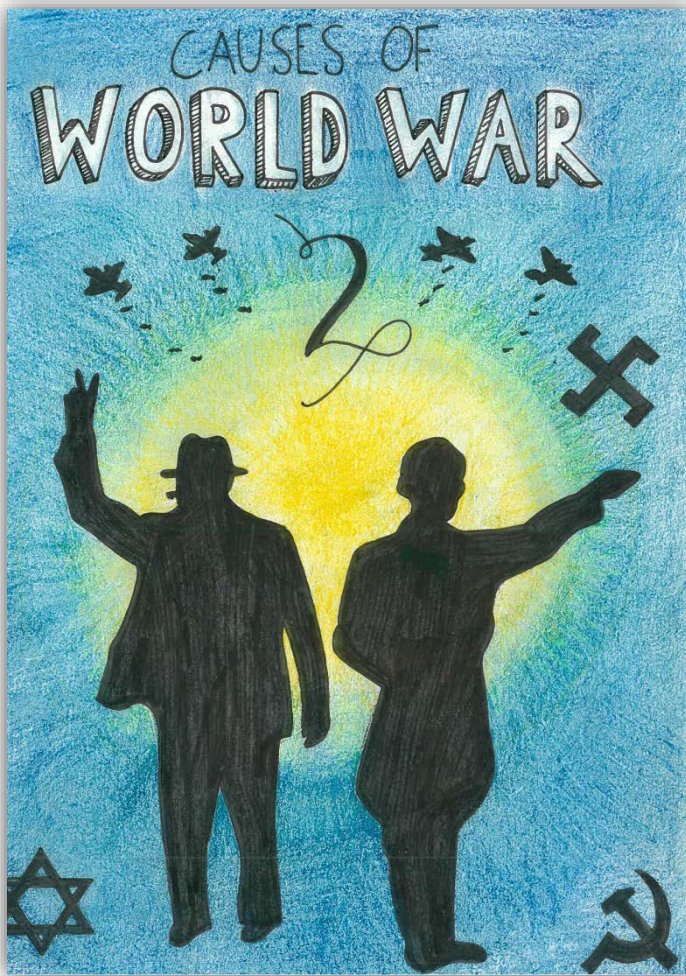
PRIMARY CRAFT



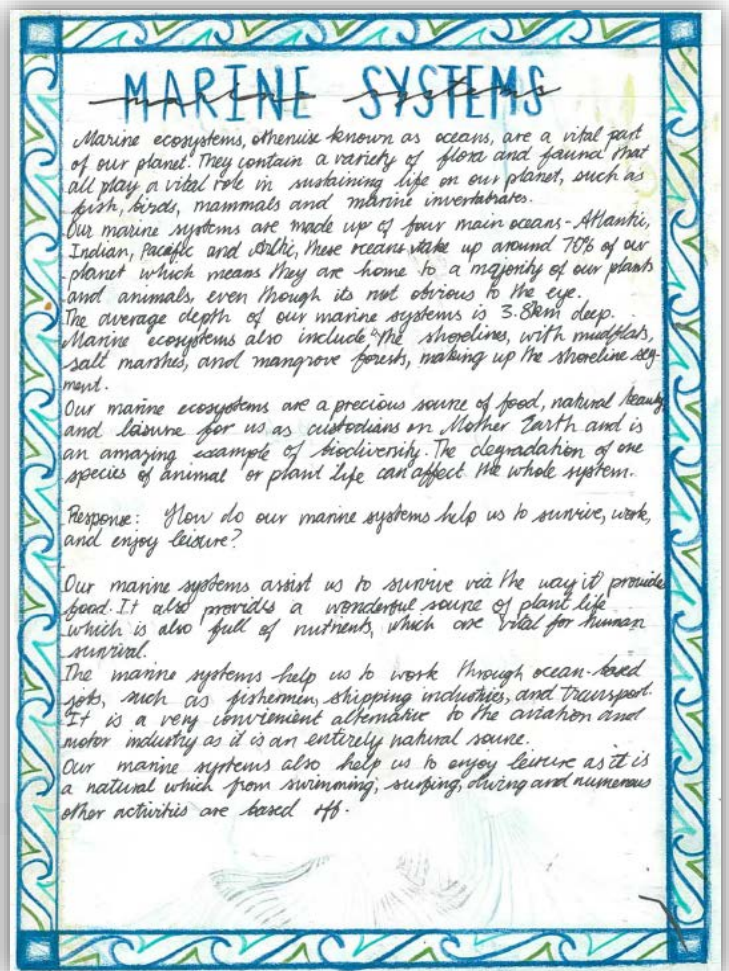


# HIGH SCHOOL

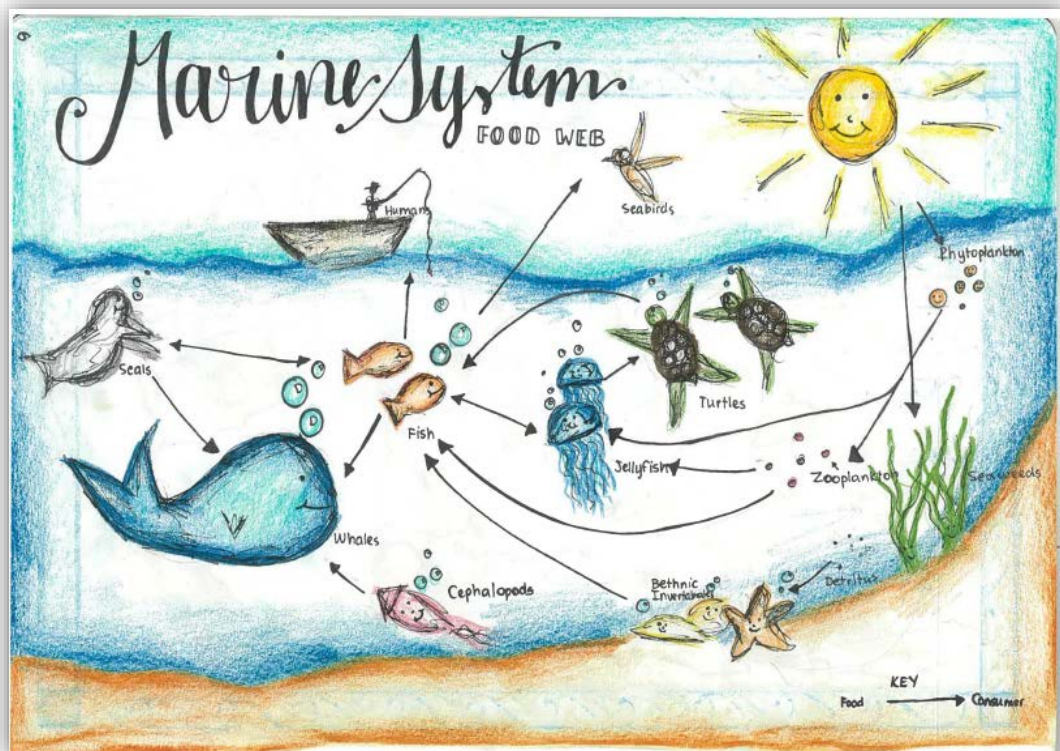
## HIGH SCHOOL MAIN LESSON BOOKS



By Poppy Ritchie C9



By Katherine Kraayvanger C11

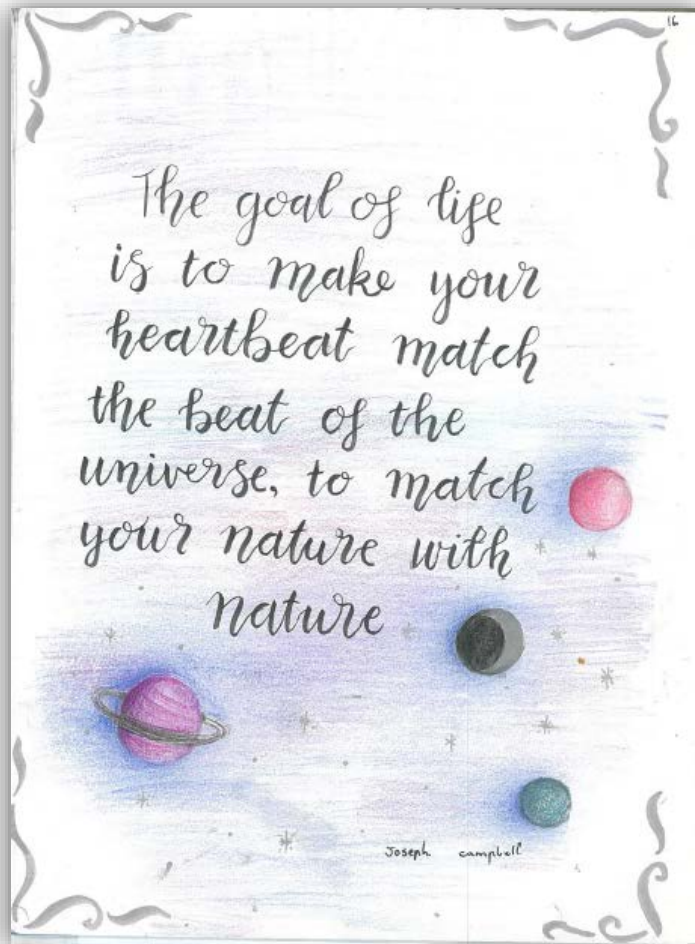


By Katherine Kraayvanger C11

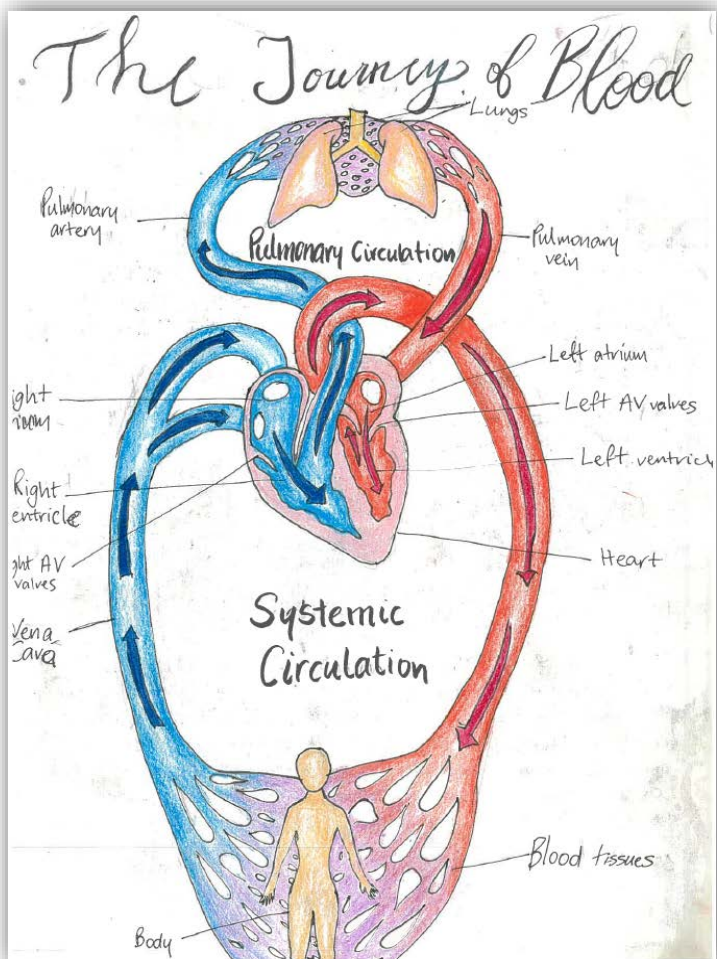




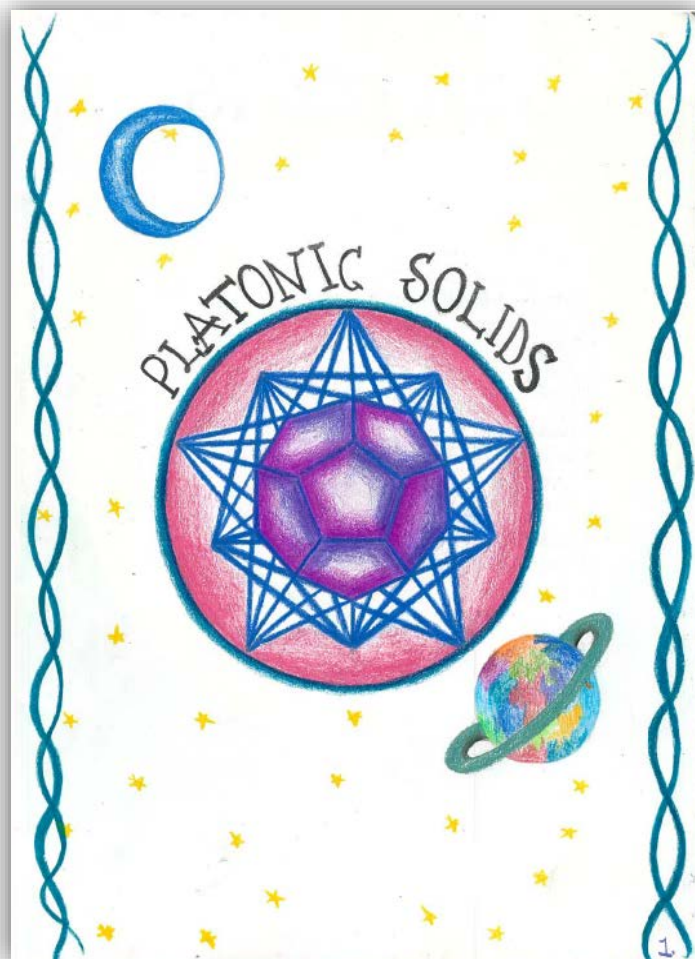
By Ysanne Sioris-Fauset C9



By Joseph Campbell C9

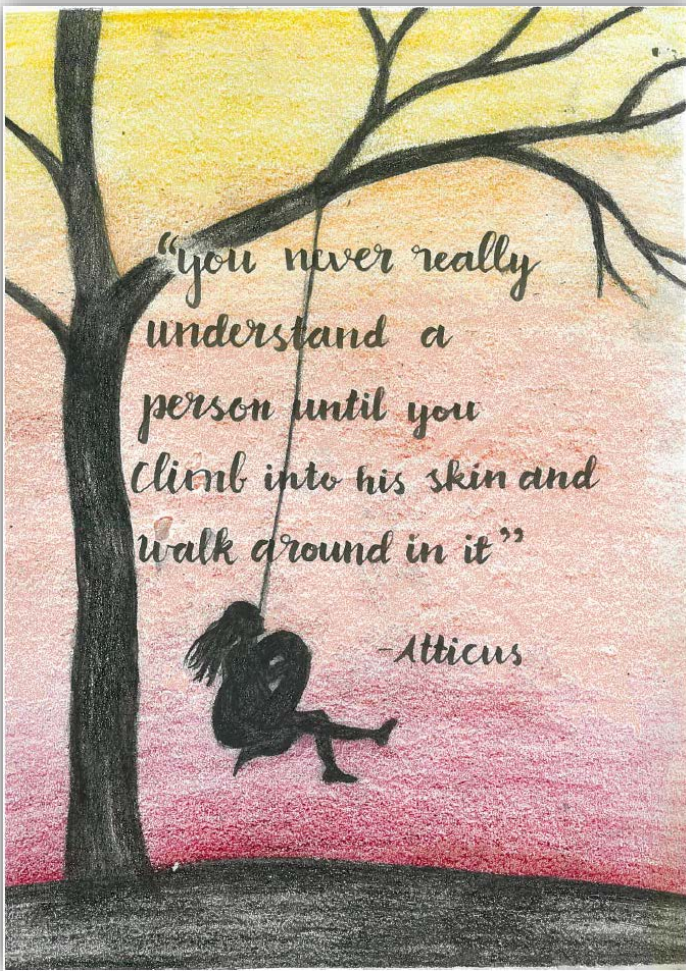


By Arianwen Painter-Jones C9

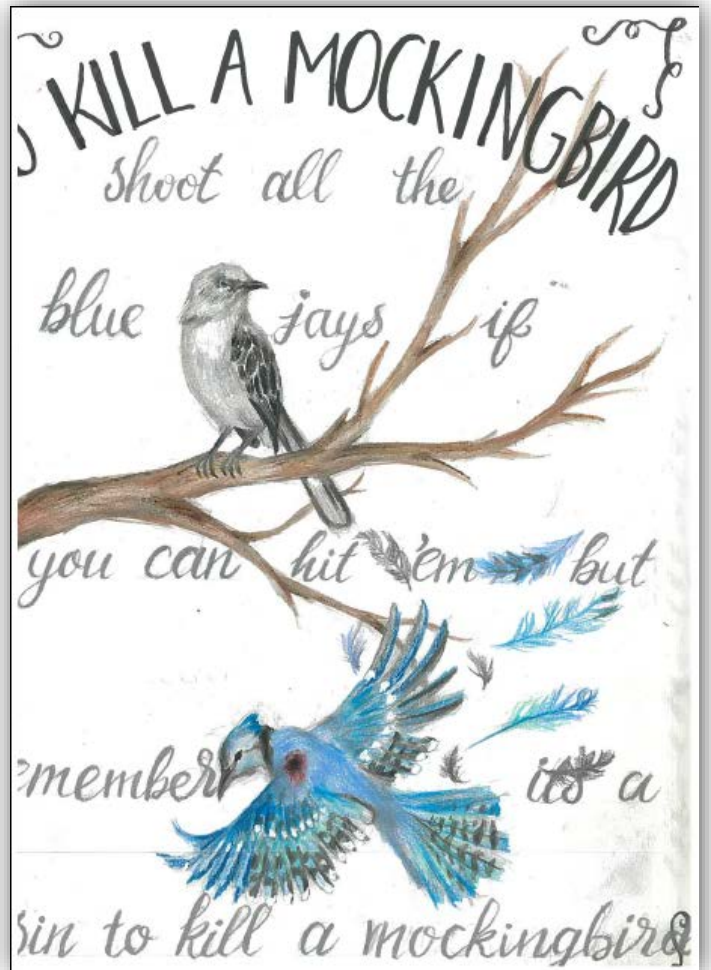


By Destinee Hayes C8

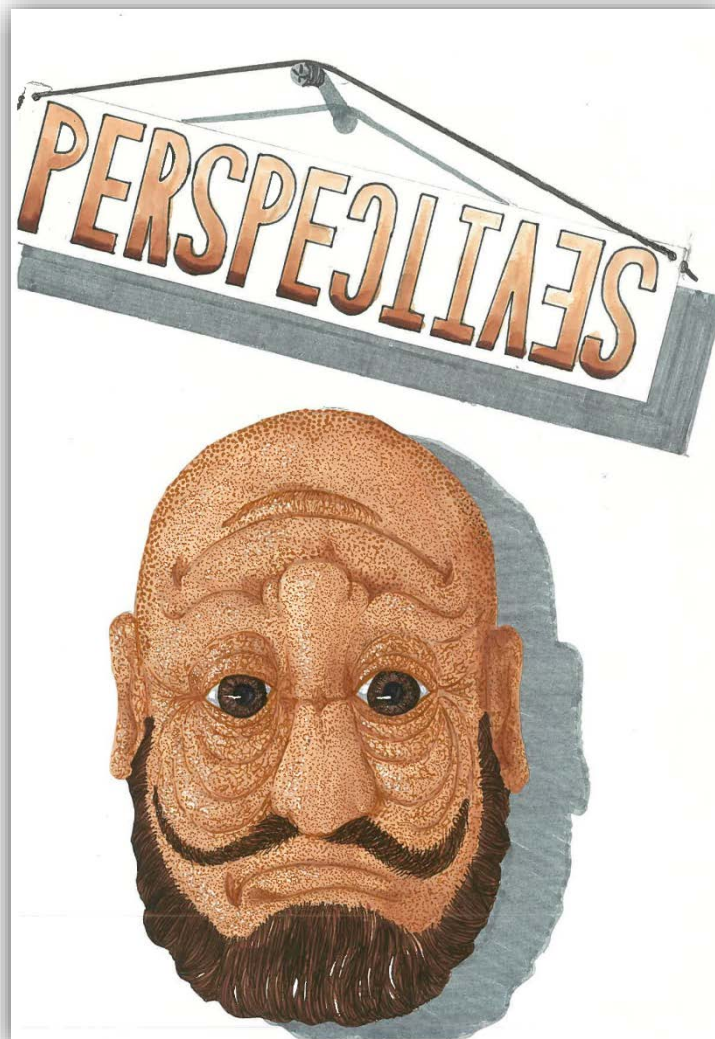




By Ysanne Sioris-Fauset C9



By Ysanne Sioris-Fauset C9



By Louis Matthys C12



## CLASS 9 ECOLOGY

This year, Class 9 Ecology has been working closely with Matt Noakes from the garden team. Earlier this term, we collected native seeds and tried to break their dormancy by burning them in the fire. Students then planted the seeds in the nursery which, when big enough, will be replanted around the school. In the last few weeks, we have created a compost heap using the "lasagne" method. This composting method is based on permaculture principles and uses waste materials from around the school:

- sawdust from woodwork
- food scraps from Kindy and the Canteen
- weeds from Open Day weeding
- dry leaves from around the school

The only materials brought in for the compost were straw bales and donated horse manure. Class 9 wasn't too impressed by the smell emanating from the food scraps, but everybody pitched in to help, adding each material layer by layer. When the compost is ready, it will be used in the Kindy gardens and raised garden beds. We are very appreciative of Matt's time and expertise.



Caitlin Deacon-Gannaway and Sean Connolly - Class 9 Ecology Teachers

## CLASS 12 PROJECTS

**PWS warmly invite you to our  
2019 Class 12 Project Presentations**

### Monday 28th October 2019

- 10.45am Welcome and introduction  
10.50am **Ruben Rosling** - Education: Is a paradigm shift coming?  
11.25am **Molly Separovich-Cook** - What is self care? How does it benefit an individual and bring balance into their lives?  
12.05pm **Flin Rozario-Jamieson** - How does fitness affect an individual physically, mentally and socially?  
12.45pm Lunch  
1.40pm **Ethan Powell** - What is Machine Learning and what is its potential?

### Monday Evening

- 5.30pm Welcome and introduction  
5.45pm **Belle King** - Is society becoming desensitised to drug use? *(Suitable for Ages 14+/HS Students)*  
6.30pm **Ethan Bates** - Do childhood experiences influence and shape us?  
7.05pm Break for tea, coffee and hot food for purchase  
7.35pm **Geordie Sicree** - Can cognitive training improve brain function, resulting in the improvement of a high-level athlete's overall performance?

## Tuesday 29th October 2019

- 10.45am Welcome and introduction
- 10.50am **Eli Mitter** - Can Aquaculture and Fish Farming have a positive impact in relieving the pressure of overfishing around the world?
- 11.25am **Anais Separovich-Cook** - Depression is a serious and growing issue in the modern world. What are the factors behind it and how can it be overcome?
- 12.05pm **Aidan Ariyaratne** - Instagram Influencers: What are they, how do they operate, and are they a benefit to society?
- 12.45pm Lunch
- 1.40pm **Matthew Brennan** - How can music be used and exploited as a powerful tool for the radicalisation process?  
(Suitable for Ages 14+/HS Students)

## Tuesday Evening

- 5.30pm Welcome and introduction
- 5.45pm **Indigo Seven** - Childhood Trauma: What is it? How does it occur? And what are the long term impacts?  
(Suitable for Ages 14+/HS Students)
- 6.20pm **Hunter Sewell** - The impacts of current human behaviours on our local river systems. What needs to be done in order to protect them?
- 7.00pm Break for tea, coffee and hot food for purchase
- 7.30pm **Idaani Ariyaratne** - Addiction is a cognitive disorder and is heavily influenced by social, emotional and environmental factors. How can understanding these factors contribute to the minimisation of discrimination surrounding substance abuse and the development of how we approach addiction recovery?  
(Suitable for Ages 14+/HS Students)

## Thursday 31st October 2019

- 10.50am Welcome and introduction
- 10.55am **Billy Nickchen-Long** - How is it possible to reduce CO<sub>2</sub> emissions, in order to lower the global warming and climate change crisis?
- 11.30am **Bella Morellini** - The horse as healer. What is the potential relationship between horse and human?
- 12.10pm Lunch
- 1.00pm **Ryan Davis** - Hypothetical Megastructures: Humanity's gateway to the stars. What are they and are they a reality for the future?

## Thursday Evening

- 5.30pm Welcome and introduction
- 5.35pm **Tala Van Mierlo** - How is the Anthropocene causing the mass decline of land animals world-wide, and what is being done about it?
- 6.10pm **Clarke Viljoen** - Isolationist, nomad, community. Which of these lifestyles is best to follow after an apocalypse?  
(Suitable for Ages 14+/HS Students)
- 6.50pm Break for tea, coffee and hot food for purchase
- 7.25pm **Eloise Bridges** - Is dreaming essential for psychological well-being?

## Friday 1<sup>st</sup> November 2019

- 10.50am Welcome and introduction
- 10.55am **Danann Edwards-O'Neill** - How should we approach addressing the subject of death?  
(Suitable for Ages 14+/HS Students)
- 11.30am **Hannah Hunter** - What is beauty?
- 12.10pm Lunch
- 1.00pm **Jacob Wolter-Karabatic** - Society is dependent on money. Does money buy happiness and is the investment in video games worth the emotional stimulation and physical impact they have on the user?
- 1.40pm **Soloman Balint-Fitzgerald** - Living off the Grid: Why move off the grid and how to achieve it?

## Friday Evening

- 5.30pm Welcome and introduction
- 5.45pm **Eva Hinsman** - How does music heal?
- 6.20pm **Louis Matthys** - What is the importance of brand identity in the modern marketplace?
- 7.00pm Break - tea, coffee and dinner available for purchase
- 7.30pm **Kathryn Lampacher** - What are the psychological impacts people with disabilities encounter when subjected to discrimination?

Thank you for supporting our Class 12s – your presence is much appreciated



# MAINTENANCE & GARDENING



We are a waste wise school!

We recycle what we use,  
separate things and you should too!  
Glass, paper, plastic and tin,  
go in your RECYCLING BIN!  
We must start now, we can't wait,  
quick or it will be too late!



## P & F

### 'THE CARRIAGE' SCHOOL SHOP



**OPENING TIMES:** Tuesday and Thursday from 8:15am-9:15am, and Wednesday from 2:30pm-3:30pm.

We stock all your school stationery supplies, uniforms and bags.  
We also have a large range of craft supplies, jewellery, knitted items, cleaning products, salt lamps, essential oil holders, amber teething necklaces, wooden toys and books.

## COMMUNITY CLASSES

### Groups/Classes

Participating in any of these activities goes towards Family Participation Hours.

*These groups for parents are run or led by teachers or parents. Members of the school community are encouraged to join any of the groups and enjoy the experience of personal growth and learning in this beautiful environment - a great inspiration for our children!*

Mondays, 9:00am-10:15am

Mondays, 10:30am-12:00pm  
(fortnightly)

Tuesdays, 9:00am

Tuesdays, 2:15pm-3:00pm

Wednesdays 9:00am

Thursdays, 9:00am-9:45am

Saturdays, 1:00pm-4:00pm

**Parents and Friends Study Group** with Anne Williams (in the Library, no children please)  
**0424 771 217.**

**Biodynamic Group** with Heidi Halter.

**Craft Group** with Pixie Stott (outside the Canteen).

**Eurythmy** with Kristina Hamilton (in Williams Hall).

**Adult Singing** join Claire Williamson and discover your inner voice (in the Music Office)

**Listening Circle** with Bruce Lee - the Administrator (in the Library). Come in for a conversation, concern, query or just to listen.

**Waldorf Wood Workers** with Christian Geyer (meet in Plaza) **0409 267 178.**



# SCHOOL NOTICES



School notices are strictly for members of the school only and may consist of: lost and found items, items for sale (student/school related), and classes / lessons within the school, etc. Please try to restrict your notice to three lines (this is free of charge). School notices will appear in this section for two weeks. If you would like the ad to appear for longer, please contact the Pabulum on 9417 3638 each week. Thank you.

**HOSTS NEEDED** - Jennifer and Horst Kornberger are looking for people to help us to make four extraordinary musicians and a puppeteer from Slovenia feel welcome while they are in WA for six weeks (from early October) rehearsing for the **Somnus** event at the Fremantle Biennale. The artists will be staying in Hilton and would love any opportunity to spend time with you, visiting your favourite places in Perth or nearby. Please email [Jennifer.kornberger@gmail.com](mailto:Jennifer.kornberger@gmail.com) if you are keen!

## MISSING

LAST SEEN IN THE PLAYGROUP STOREROOM



*THIS IS NOT THE AN EXACT IMAGE OF THE BABY  
THAT IS MISSING IT'S ONE OF HER SIBLINGS, OUR  
MISSING BABY IS FAIRER!*

If you have any information of her whereabouts or you have seen her wandering around the school or even outside of the school grounds, please contact reception ~ or call Eugene on 0401254770

She is a new edition to our playgroup family of babies and is dearly missed.



# COMMUNITY NOTICES



Community Notices are for members of the school's community only and may consist of; business adverts, producers, services, items for sale (non-school related), etc. keeping in mind that they need to be consistent within our schools' ethos. Please try to restrict your notice to three lines (this is free of charge). All Community Notices will appear in this section for two weeks only. If you would like a ¼ page advert, a \$10 fee is required and will only appear in Week 2 and Week 8.

**HOUSE & PET-SITTER NEEDED** - from 3<sup>rd</sup>-10<sup>th</sup> October for our clean, tidy, chemical-free home in Bibra Lake and our 3 beloved pets (rabbit, bird, fish). PWS family. Contact 0407 570 950

**HOUSE RENTAL REQUIRED** - PWS family seeking a home to rent long term, minimum three bedroom. Ready to move in any time between mid October and early January. References available. Please call 0404 108 047.





## SAILING SEASON STARTS SUNDAY 13 OCT 2019

### Sailors have more fun!

The new sailing season is already upon us, and we are encouraging juniors to join us to learn or improve their sailing skills. We have fleets of Optimists, Toppers and Nacra 350 (catamarans) to fit everyone's needs.

Throughout the year, we offer courses from Start Sailing course all the way to Start Racing. The courses consist of multiple 3-hour sessions, assisted by an accredited sailing instructor. All safety equipment and life jackets are provided, as well as a free sailing instruction book.

Meet every Sunday at 8:30 am and enjoy 3 hours of fun and sailing! Our beautiful sailing club is situated at the end of Woodman Point (northern side) and well sheltered from the strong seabreeze.



Contact Isabel on 0412 527 847 or e-mail [isabel.aujoulet-law@jbosc.org.au](mailto:isabel.aujoulet-law@jbosc.org.au)



### Early Childhood Teacher - Fulltime Class One Teacher - Fulltime

Yallingup Steiner School is an independent school nestled in the hills of Yallingup. The school is searching for a loving and caring Early Childhood teacher and an imaginative and committed teacher for the Class One position in 2020. Our Teachers work towards providing a nurturing environment and use their strong organisational and classroom management skills to implement a structure that caters for the rhythm of the day in keeping with the understandings of Steiner Education.

All Applicants must be eligible for TRBWA registration, WWC card and demonstrate a commitment to Steiner education

Working at our school and living in our community is an opportunity to enjoy a unique lifestyle and become part of a unique, supportive and friendly community

Please contact the school on 08 9755 2230 or [registrar@yss.wa.edu.au](mailto:registrar@yss.wa.edu.au) for further information and selection criteria.

Applications for the Class Teacher position closes at 4pm on September 26th  
Applications for the Early Childhood position closes at 4pm on October 31st

# PIXIE STOTT CANTEEN

Canteen Open times: **Mon, Tues, Wed and Fri, 8:10am-2:00pm. Thurs 8:10am-1:30pm**  
**After school - Tues and Wed 3:00pm-3:15pm and Thurs 2:10pm-2:30pm.**

## Menu for Term 4

**All Primary school students must order before school for morning tea and lunch.**

### Daily specials (coloured **must be ordered**):

<b>Monday -</b>	Vegetable chilli served with rice, corn chips, natural yoghurt and cheese. (GF) ( <b>vegan</b> available)	<b>\$5.50</b>
<b>Tuesday -</b>	Chicken and vegetable pie, vegetable pie, chicken korma pie, or chunky beef and vegetable pie.	<b>\$5.00</b>
<b>Wednesday -</b>	Sushi hand rolls ( <b>GF and egg free</b> ): Tuna and cucumber or avocado and mixed vegetables ( <b>vegan</b> ). Miso Soup.	<b>\$4.00</b> <b>\$4.00</b>
<b>Thursday -</b>	Wraps: Egg and salad, cheese and salad or ham and salad. <b>Toasted chicken, spinach, sundried tomato and cheese wrap.</b> <b>Toasted spinach, sundried tomato and cheese wrap.</b>	<b>\$4.50</b> <b>\$6.00</b> <b>\$5.00</b>
<b>Friday -</b>	Beef burger with salad ( <b>GF</b> available) or tempeh burger with salad ( <b>vegan</b> ) ( <b>GF</b> available).	<b>\$6.00</b>

### Available everyday (items with a ★ **must be ordered**):

#### Savoury:

Rice paper rolls – tempeh, bean noodles and vegetables (GF and <b>vegan</b> ).	<b>\$5.50</b>
Salad bowls	<b>\$4.50</b>
<b>*add boiled egg or cooked chicken extra \$1.00</b>	
★ Gluten free beef pie.	<b>\$5.50</b>
★ Beef sausage in wholemeal bread.	<b>\$2.50</b>
Spinach and ricotta rolls.	<b>\$4.50</b>
Cheese and tomato toasties.	<b>\$2.50</b> ★ <b>Gluten free</b> <b>\$3.00</b>
★ Toasted ham, cheese and tomato sandwiches.	<b>\$3.50</b> ★ <b>Gluten free</b> <b>\$4.50</b>
★ Pizza - vegetable or meat.	<b>\$3.00</b>
Boiled egg (GF).	<b>\$1.00</b>
Popcorn (GF) ( <b>vegan</b> ).	<b>50c</b>

#### Sweet:

Cakes (assorted variety).	from	<b>\$2.00</b>
Bliss balls (GF) (raw)		<b>\$2.50</b>
Cookies.	from	<b>\$1.00</b>
Dried fruit and nut pack (GF) ( <b>vegan</b> ).		<b>\$1.00</b>
Fresh fruit.	from	<b>50c</b>
Icy Poles ( <b>primary only after school</b> ).		<b>\$1.50</b>

#### Drinks:

Carton water.	<b>\$2.00</b>
Organic Kombucha ( <b>high school only</b> ).	<b>\$4.00</b>
Flavoured chocolate or mango Bannister Downs pouches ( <b>primary only after school</b> ).	<b>\$2.50</b>
Slushies ( <b>primary only after school</b> ).	Sm <b>\$2.50 / Lg \$4.00</b>
Organic Juices.	Sm <b>\$2.50 / Lg \$3.50</b>
Coconut water.	Sm <b>\$2.50 / Lg \$4.00</b>
Plain Milk.	Sm <b>\$1.50 / Lg \$2.50</b>
Hot Chocolate.	Sm <b>\$3.00 / Mug \$3.50 / Take away \$4.50</b>
Coffee.	Mug <b>\$3.50 / Take away \$4.50</b>
Long Black.	Mug <b>\$3.00 / Take away \$4.00</b>
Tea.	Mug <b>\$2.00 / Take away \$3.00</b>
Herbal Tea.	Mug <b>\$2.50 / Take away \$3.50</b>

**\*Almond or coconut milk extra \$1.00.**

***Bring your own take away cup for 50c discount!***