



Pabulum

Perth Waldorf School

14 Gwilliam Drive,

Bibra Lake WA 6163

Telephone: 9417 3638

Email: adminpws@pws.wa.edu.au

Website: www.pws.wa.edu.au

TERM 3 CALENDAR

AUGUST

Tue 27	Class 9 Parent Night
Wed 28 - Fri 30	Paradise Play - 10:40am
Wed 28	Class 7 Excursion to Perth French Theatre
Thur 29	Rose Room, Rainbow Room and Cedar House Parent Night - 1:00pm
Sat 31	OPEN DAY & FAIR - 10:00am-3:00pm

SEPTEMBER

Mon 2	PUPIL FREE DAY
Wed 4	Class 11 Parent Night
Wed 4	Class 5 Excursion to Kings Park
Mon 9 - Fri 13	Class 11 and 12 Exams
Wed 11 - Fri 13	Class 7 Kulbardi Play
Fri 13	Greek Olympics
Sun 15 - Fri 20	Class 10 Warrdagga Camp
Mon 16 - Fri 27	Class 11 Community Service
Tue 17	Class 2 Eurythmy Performance
Mon 23 - Fri 27	Class 8 Play
Wed 25	Michael Festival
Thur 26	Michael Festival Assembly
Thur 26	LAST DAY OF TERM 3

THIS WEEK
OPEN DAY AND FAIR
 Saturday, 31st August
 10:00am-3:00pm
 See inside for details.

NEXT WEEK
PUPIL FREE DAY
(in lieu of Open Day)
 Monday, 2nd September

STUDENT ABSENCES:

Please let the office know by 8:30am.
 Text: 0429 680 969, Phone: 9417 3638,
 Email: absence@pws.wa.edu.au,

PABULUM INFORMATION:

- Pabulum contributions need to be emailed to pabulum@pws.wa.edu.au by 2:15pm Thursdays.
- To view Pabulum as a PDF, go to www.pws.wa.edu.au
- To receive the link via email, please send a request to adminpws@pws.wa.edu.au

Term 3, Week 6

Tuesday, 27th August, 2019

OPEN DAY and FAIR - This Saturday

We welcome everyone to Perth Waldorf School this Saturday as we showcase the awesomeness of our school and the work of the teachers with the children. It is also a great opportunity for fund raising (thank you P&F) and buying gifts of appreciation at the wonderful stalls on display.

Our school welcomes the whole community. Enjoy the day!

Steiner Education is attractive to teachers - defying the trend!

In a recent media article, Nan Bahr, Dean of Education and Anne Ferreira, Director of Teaching at Southern Cross University suggested there were **seven reasons why the number of students enrolling in teaching courses was dropping rapidly** in most states. Obviously there are multiple reasons however many of the things turning people away from becoming teachers don't have to exist and it's a credit to Steiner Education that we strive to make teaching an attractive career by defying the norm! Here's our take on the seven reasons:

1. Teacher education competency fixation

There are 37 competencies a teacher is expected to have according to the Australian Institute for Teaching and School Leadership (AITSL) standards. None of them address personal attributes. Bahr and Ferreira say it is turning teachers away.

Steiner Education believes the 37 competencies are necessary but in no way sufficient. Students, parents and especially teachers want the relationship dimension to be highly regarded. The types of things we value in our best teachers are absent in the AITSL standards such as inspiring students; finding teachable moments and using humour; caring enough to go the extra mile for students and rejoicing when students master important ideas. Why would anyone aspire to be a teacher if the interpersonal dimension is lost or not appreciated? At PWS, the mantra that we try first and foremost to "**employ good humans**" is tapping into the interpersonal dimension in a big way. Thanks to all our teachers.

2. Standardised testing obsession

PWS eschews standardised testing for the very reason so many international reports have found they (1) don't lead to better outcomes and (2) they stifle teacher creativity. "In Australia standardised testing has become a national sport" say Bahr and Ferreira and they say the national obsession is a problem. PWS highly values teacher creativity and much of our Professional Development is asking teachers to develop creativity in their lives.

3. Lack of autonomy

Bahr and Ferreira say that "in Australia we micromanage and control" what is taught and how it is taught and the emphasis on play and the arts is lacking. Our school places a strong value on the arts and play and urge teachers to be responsive and tailor teaching to student needs. We especially urge the teacher to observe and truly see the students and what it is they need. This autonomy should make the job more attractive than following a pre-arranged script that doesn't address the needs of the students in the room.

(continued over next page...)

IN THE LIGHT OF A CHILD

*Now springing from the fertile Mother of all living things,
 the Earth,
 Comes joy-of-growth, as power leading all her children unto birth.
 My life is charmed, my strength is sure,
 For I am armed – my heart is pure;
 And I can join amidst this joy and merriment with radiant mirth!*

Michael Hedley Burton

4. Work intensification

Our teachers work hard. Very hard. People regularly say, "I wouldn't be a teacher for anything" usually because of the complexity of the job and working with so many human beings is exhausting and can be frustrating. We try to ensure what teachers teach is authentic and meaningful and we try to keep the boundary between what is education and what is the responsibility of parents and guardians. Bahr and Ferreira say that the crowded curriculum and the expansion of teacher responsibilities into social skills previously addressed at home, makes the job less and less attractive. Please show respect and appreciation for the hard work of our teachers. Help make PWS defy the trend!

5. Negative public image

An audit of newspaper stories found there are more negative than positive stories and that doesn't help attract people to teaching!

6. Teacher bashing

Unfortunately, in our society (unlike many others where teaching is highly valued as a profession) teaching as a vocation is publicly scorned. Like most teachers, PWS teachers give their all to the children and strive to meet their needs in many ways. The way we raise and educate our children has a huge impact on all of our futures so it behoves us all to turn the conversation around. Thank you to our community for your trust and support. We place teachers at the centre of decision making and educational direction and they deserve our respect.

7. Teachers' salaries are poor

Bahr and Ferreira suggest "the final nail in the coffin is poor salaries". As a society we could do more to pay teachers a similar starting salary to other professions. PWS matches State School teacher salaries and tries to make the conditions positive and rewarding. We appreciate the trust and support given by parents who pay tuition fees for this unique educational opportunity.

NOTE:

- Perth Waldorf School runs a two year, part time Steiner Teacher Training course on our campus.
- To be employed at PWS you must be registered with the Teachers Registration Board.

Blessings on your week,

Bruce Lee - School Administrator

GENERAL NEWS

OPEN DAY AND FAIR

Our annual Open Day and Fair is coming up on **Saturday, 31st August, 10:00am-3:00pm.**

PARKING

There will be **NO** parking available on school grounds! Parking can be found at **ADVENTURE WORLD CAR PARK** at the bottom of Gwilliam Drive and at **BIBRA LAKE CAR PARK**. Please do **NOT** park on the verges around the school as your car may be ticketed. Also please do **NOT** park at Red Rooster, Goodlife Health Club and the Restaurant, as your car may be clamped.

NEEDED

TABLES - We are running low on tables to use for stalls on the day. If you have a fold up table available to lend us for the day, we would be much appreciative.

RAFFLE PRIZES - we are seeking individuals and businesses within the Community to **donate prize items** for the Raffle.

RIBBON - ribbons are needed to help make our beautiful wands.

FLOWERS AND GARLANDS - flowers are needed to make garlands on the day. Please start looking around your gardens for some beautiful fauna and flora that you can donate. We will be accepting flower donations as of the 29th August.

LEMONS AND LIMES - Lemons and limes are needed for our lemonade stall.

REMINDERS

- Parents who are making **baked goods** for the day need to fill out a food label. Labels are a requirement from the Department of Health, and needs to be displayed with any food related item for Open Day. Please see our labels on the back of this Pabulum.
- Canteen accounts will be unavailable to use on the day as it is fundraising for P&F and not the Canteen.

Please see our Open Day & Fair Programme, Map and some stall information over the next three pages.

2019 Open Day and Fair Programme

Please Note
Times and Programme are subject to change

10.00am Official Opening with Mayor Logan Howlett (Central Plaza)
10.30am Welcome to Country with Marie Taylor (Williams Hall)

TOURS AND TALKS

11.00am	High School Tour and Talk	Meet outside Galileo and Durer
11.00am	Primary School Tour and Talk	Meet outside Seekers Place
12.00pm	Early Childhood Talk	Meet outside Cedar House
1.00pm	Primary School Tour and Talk	Meet outside Seekers Place

CHOIRS, ORCHESTRA, ENSEMBLES AND MUSIC PERFORMANCES

PRIMARY SCHOOL

10.30am	Class 7	Orchestra (Williams Hall)
12.00pm	Class 6	Orchestra (Williams Hall)
1.00pm	Class 5	Orchestra (Williams Hall)
2.00pm	Class 5, 6 and 7	Ensemble (Williams Hall)

HIGH SCHOOL

10.30am	Class 8	High School Plaza	<i>*In the case of rain these performances may be in the Music Room.</i>
11.30am	Class 9	High School Plaza	
12.30pm	Class 11/12	High School Plaza	
1.30pm	Class 10	High School Plaza	

CLASS ACTIVITIES AND DEMONSTRATIONS

PRIMARY SCHOOL

Class 1	12.00pm	Class Performance
Class 2	10.45am	Class Performance
Class 3	11.15am	Class Performance
Class 4	11.30am	Class Performance

HIGH SCHOOL

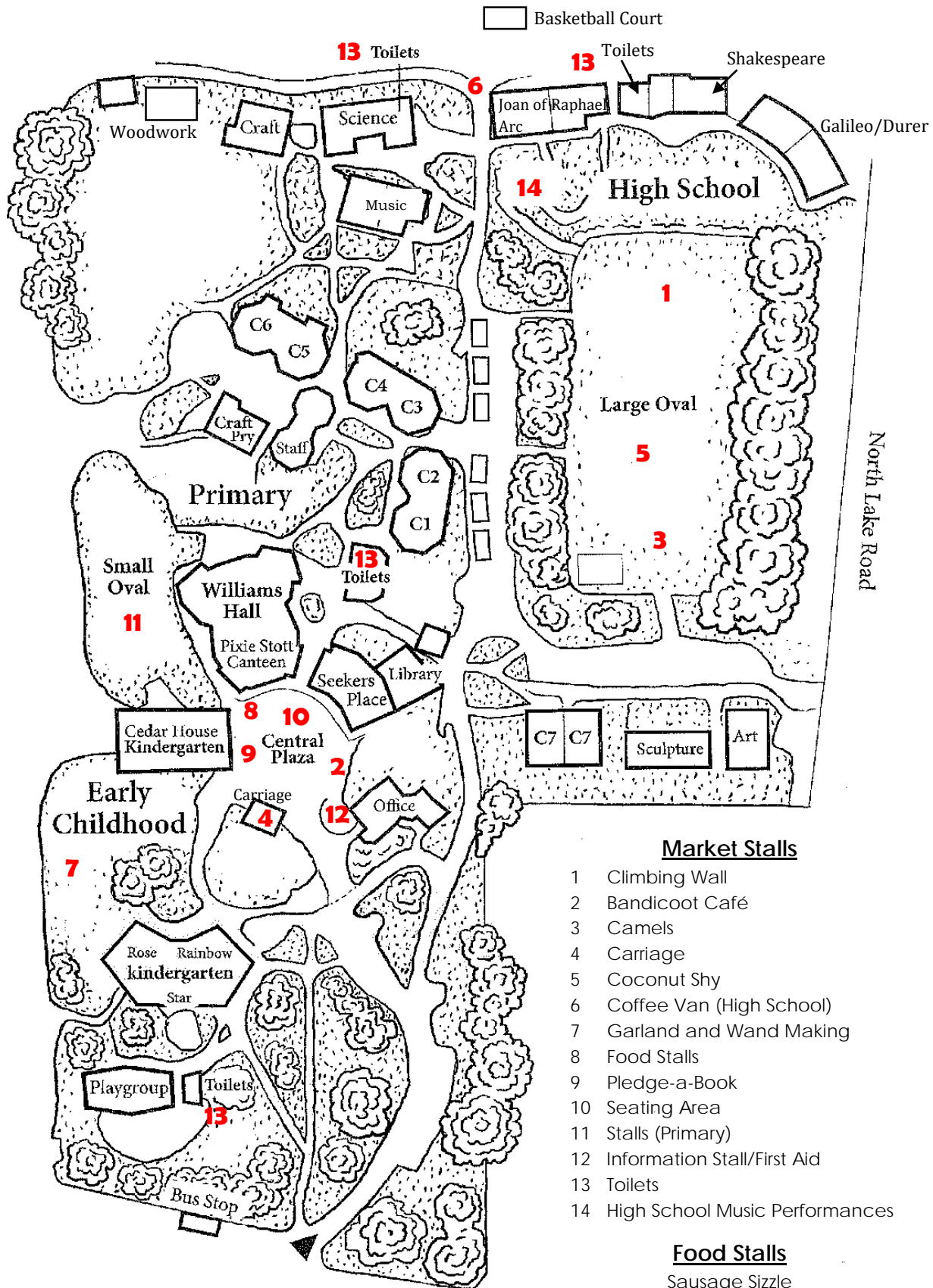
Basketball Court	All day	Student led games
Sculpture	All day	Community coil pot
Paracelsus (Science - downstairs)	10.30am	Chemistry
Galileo/Durer	11.30am	Class 11 Slam Poetry
Galileo/Durer	11.45am	Class 12 Faust
Galileo/Durer	12.00pm	Class 8 English
Da Vinci (Science - upstairs)	12.00pm	Class 11/12 Physics

HIGH SCHOOL DISPLAYS

Joan of Arc	Mathematics
Raphael	English
Shakespeare	Humanities and Languages
Galileo/Durer	Talks, High School Journey and Class 12 Projects
Kirkwood (Science - downstairs)	Biology
Da Vinci (Science - upstairs)	Physics and Chemistry
Cavendish (Science - upstairs)	Photography
Craft	Craft and Textiles
Woodwork	Woodwork and Blacksmithing
Seekers Place	Drama
Art and Sculpture	Variety of Art and Sculpture

3.00pm Closing of Stalls – please drive home safely

Perth Waldorf School Map



Our Contributors

A special THANK YOU to ALL our contributors.

Perth Waldorf School is very appreciative of everything our contributors have donated towards this annual event to assist our P&F and their fund raising.

Market Stalls

- 1 Climbing Wall
- 2 Bandicoot Café
- 3 Camels
- 4 Carriage
- 5 Coconut Shy
- 6 Coffee Van (High School)
- 7 Garland and Wand Making
- 8 Food Stalls
- 9 Pledge-a-Book
- 10 Seating Area
- 11 Stalls (Primary)
- 12 Information Stall/First Aid
- 13 Toilets
- 14 High School Music Performances

Food Stalls

Sausage Sizzle
Quesadilla Stall
Curry Stall
Lemonade Stall
Popcorn Stall
Bandicoot Café (Cake Stall)
Chai and Hot Chocolate Stall
Pixie Stott Canteen

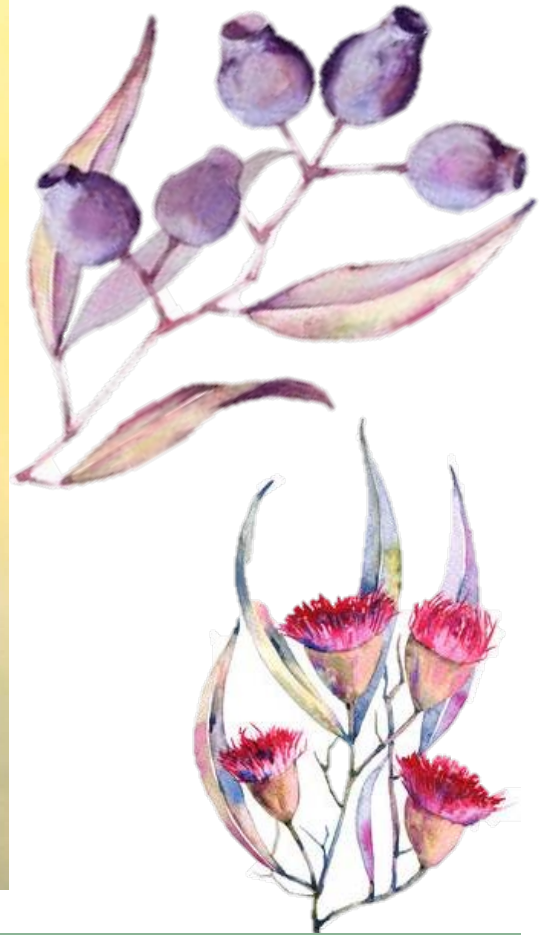
PLEDGE-A-BOOK

Please come along to our Open Day stall in the Plaza
to select a book from our wide selection and donate it to our Library.

Prices from \$10 to \$65.

Payments can be made by cash or eftpos.

Be part of this very worthwhile project in support of our children and their
reading adventures! Thank you!



WASSAA will be at the Perth Waldorf Open Day on
Saturday 31 August from 10am to 3pm

Come and say hi at the *Wassaa* stall!

If you're a past student, parent, employee or volunteer of any WA Steiner School

SIGN UP FOR MEMBERSHIP or information about the newly formed
WA Steiner Schools Alumni Association.

We need you to contribute ideas, activities or time towards making
Wassaa meaningful to its members!

Email us at wassaa@pws.wa.edu.au OR
Phone 0412 921 196



WASSAA

EARLY CHILDHOOD

FROM THE COORDINATOR

Lately we have had a number of children coming to Kindy when they are ill. This makes for a miserable day for them, and risks spreading illnesses to other children and staff. Despite the disruption it causes to family schedules, please consider with care when you as parent make the decision on whether to send your little one to school or not. School cannot care for sick children safely, nor do we want to be exposing each other to contagious illnesses unnecessarily.

Please note the following thoughts which have been shared for your consideration:

Illness in the Kindergarten

Please remember that when children are sick, they need to be kept at home. In early childhood, the foundation sense of "Life" needs nurturing if the child is to grow in trust of the world. Moving through times of sickness helps the children grow in their sense of wholeness and well-being. Periods of childhood illness mark important milestones in their lives, and can become opportunities for meaningful transitions for them, and bonding with those that care for them. Although this is difficult for busy parents to manage, we want to safeguard each and every child's health.

Teachers are always interested in the progress of your child's health, so keep them informed, and we will do likewise. When medications are needed, teachers are not authorised to administer these unless the parent's written request has been approved.

Please make sure that you have given written health plan information to the office, and that this is up-dated each semester.

Jennifer Byrne - Early Childhood Coordinator

PRIMARY SCHOOL

FROM THE COORDINATOR

DRESS CODE REMINDER

The College of Teachers requests support from parents with regard to the Perth Waldorf School dress code.

Over the next few weeks, teachers will be more actively monitoring dress standards. Students who are not wearing appropriate items will be asked to turn the item inside out or cover/replace the offending item with another piece of clothing. In some instances parents may be contacted to support the school policy regarding the school dress code.

School Dress Code - Summary (See Handbook for full details):

1. Children's clothes are to be neat, clean and well fitting.
2. Clothes are to be plain coloured or of simple design without prints, advertising, numbers, pictures or caricatures. Fluorescent colours are unsuitable and black is not to be the predominant colour.

The following are not permitted:

- Tops shorter than hip length
- Shoulder straps thinner than one inch
- Revealing clothing and underwear
- Very tight clothing where underwear is visible.
- Clothing which is dirty, untidy or has tears
- Short shorts

We encourage you to be aware of and uphold the standard of dress in the school; the teachers wish to join with parents in a combined effort to ensure that student dress is in line with current policy, as outlined in the school handbooks.

Further to the information contained in the handbooks the College of Teachers has considered that some changes are required in light of inappropriate trends.

Lisa Payne - Primary School Coordinator

SLAPPED CHEEK NOTICE

A case of Erythema infectiosum 'Fifth' disease, 'Slapped Cheek' Syndrome has been confirmed in Class 4. Please read the below information flyer and keep an eye out for symptoms.

Parvovirus B19 (Erythema infectiosum, 'Fifth' disease, 'Slapped Cheek' Syndrome)	
A common, acute, viral infection. Symptoms include fever, red cheeks and neck, itchy lace-like rash on the body and limbs. This infection is not caused by the same parvovirus that infects dogs.	
Transmission	Airborne or droplet; direct contact with contaminated nose or throat secretions; mother-to-baby
Incubation period	1 to 2 weeks
Infectious period	Not infectious after the rash appears
Exclusion	Exclusion not necessary
Treatment	Varies with symptoms
Contacts	Do not exclude. Pregnant women who may have been exposed to parvovirus B19 should consult their doctor
Immunisation	None available

Connect Learning WA Before and After School Care

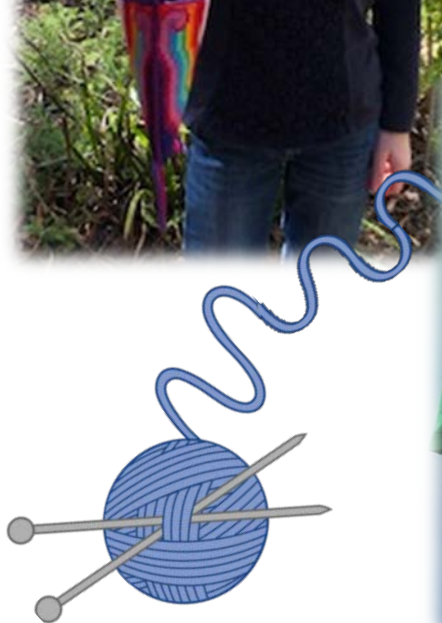
Connect Learning are available for casual bookings all year round if you ever need last minute care. Feel free to pop in for a chat with Nicola (in the Extra Lesson Room before and after school).

Before School Care	6:30am to 8:25am
After School Care	2:00pm to 6:00pm
Vacation Care	6:30am to 6:00pm
Early Finish Thursdays	2:30pm to 6:00pm
Pupil Free Days	6:30am to 6:00pm

If you are interested in your child attending please email Nicola Perthwaldorf@connectlearningafterschool.com.au

The service is only available to Primary aged children.

PRIMARY CRAFT



HIGH SCHOOL

MY CLASS 9 GRATITUDE PROJECT

Hi, I'm Jesse. I'm 14 years old and I'm passionate about helping to find a cure for childhood cancer.

Childhood cancer is a devastating diagnosis that can hit any family at any time. I've been growing my hair for 18 months in order to raise money to help find a cure, and to support those who are suffering from this terrible disease.

Funds raised will be donated to *Childrens Leukaemia & Cancer Research Foundation (Inc)* in WA. When I hit my fundraising target, I will shave my head and donate my hair to *Variety WA*. *Variety WA* will use the hair to make wigs for children who have lost their hair during chemotherapy treatment.

To support me, please visit:

<https://www.gofundme.com/f/shaving-my-head-for-kids-with-cancer>

Every bit you donate will help prevent this awful illness from taking the life of a young person. Thank you so much for your support, it means so much to me!



JESSE.
Supporting:



CHILDREN'S
Leukaemia & Cancer Research
Foundation (Inc.)



LIBRARY NEWS

An opportunity to support the purchase of beautiful new books for the Perth Waldorf School Library presents itself this coming Open Day.

Pledge a Book is an iconic Library event that has been running for many years. Our Library holds many donated books from families and staff from previous years. A sticker in acknowledgement of the family who pledged the book is applied inside the book. It is such fun to watch a child notice that they have borrowed book that was pledged by their family!

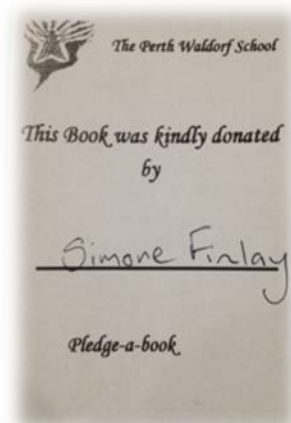
Prices of books available to pledge to the library range from \$10 to \$65. Payment can be made by Cash or Eftpos.

Please be part of this very worthwhile project in support of our children and their reading adventures!

Book of the week:

Growing Children, Thriving Children, raising 7 to 12 year olds with confidence and awareness by Lou Harvey-Zahre. This book is bursting with insightful advice, practical and heart-warming ideas, and creative discipline tips.

Penny Champ and Kelly Geyer - Library



MAINTENANCE & GARDENING

We are a waste wise school!

We recycle what we use,
separate things and you should too!
Glass, paper, plastic and tin,
go in your RECYCLING BIN!
We must start now, we can't wait,
quick or it will be too late!



COMMUNITY CLASSES

Groups/Classes

Participating in any of these activities goes towards Family Participation Hours.

These groups for parents are run or led by teachers or parents. Members of the school community are encouraged to join any of the groups and enjoy the experience of personal growth and learning in this beautiful environment - a great inspiration for our children!

Mondays, 9:00am-10:15am

Parents and Friends Study Group with Anne Williams (in the Library, no children please) **0424 771 217.**

Mondays, 10:30am-12:00pm
(fortnightly)

Biodynamic Group with Heidi Halter.

Tuesdays, 9:00am

Craft Group with Pixie Stott (outside the Canteen).

Tuesdays, 2:15pm-3:00pm

Eurythmy with Kristina Hamilton (in Williams Hall).

Wednesdays 9:00am

Adult Singing join Claire Williamson and discover your inner voice (in the Music Office)

Thursdays, 9:00am-9:45am

Listening Circle with Bruce Lee - the Administrator (in the Library). Come in for a conversation, concern, query or just to listen.

Saturdays, 1:00pm-4:00pm

Waldorf Wood Workers with Christian Geyer (meet in Plaza) **0409 267 178.**

'THE CARRIAGE' SCHOOL SHOP

OPENING TIMES: Tuesday and Thursday from 8:15am-9:15am, and Wednesday from 2:30pm-3:30pm.

We stock all your school stationery supplies, uniforms and bags.
We also have a large range of craft supplies, jewellery, knitted items, cleaning products, salt lamps, essential oil holders, amber teething necklaces, wooden toys and books.



SCHOOL NOTICES



School notices are strictly for members of the school only and may consist of: lost and found items, items for sale (student/school related), and classes / lessons within the school, etc. Please restrict your notice to three lines (this is free of charge). School notices will appear in this section for two weeks. If you would like the ad to appear for longer, please contact the Pabulum on 9417 3638 each week. Thank you.

CAR POOLING - I'm looking for someone who would like to do car pooling with me from Kwinana / Rockingham area. Please contact Carola **0402 598 896**.

LOST - SHAWL wool purple green orange patterned held by silver pin. Picture on notice boards. OCTAGONAL wood chopping board. Reward Anita Staude **0423 52 613** or front office

Rudolf Steiner College Perth

Movement and Perception with Gosia Winter

an exploration of inner perception with Bothmer Gymnastics



**Only a few
places left!**

In beholding another's movement, we are able to develop a more conscious understanding and perception not only of that person but of universal inner motifs expressed in gestures.

Working with children, we approach lovingly the mystery of each individual child through a heightened perception of their many aspects, including movement, that can lead us to knowing the next, concrete steps we may need to take in our professional relationships with them.

Using Bothmer movement exercises, observation and discussion, the aim of this workshop is to introduce these themes and contribute a perspective towards the perception of inner realities for each participant.

Saturday 7th September 10.30 - 12.30

Silver Tree Steiner School
\$30

Please book with Jenny Hill (RSC) as numbers are restricted for space.

Open to everyone



COMMUNITY NOTICES



Community Notices are for members of the school's community only and may consist of; business adverts, producers, services, items for sale (non-school related), etc. keeping in mind that they need to be consistent within our schools' ethos. Please restrict your notice to three lines (this is free of charge). All Community Notices will appear in this section for two weeks only. If you would like a ¼ page advert, a \$10 fee is required and will only appear in Week 2 and Week 8.

ROLLERBLADES FOR SALE - Used quality male rollerblades for sale size UK 6 / Europe 39, need a bit love and care, \$50 ring Carola 0402 598 896.



Applications are invited for the position of:

PART-TIME EDUCATION COORDINATOR

0.6FTE with possibility of 0.8FTE commencing Term 4, 2019

Silver Tree Steiner School:

Nestled amongst over 25 acres of beautiful bushland in the Perth Hills, Silver Tree Steiner School provides a Steiner education from Early Childhood to Year 6 for over 200 students. Supported by a vibrant and nurturing school community, the education gives children time and space to deeply experience a creative, enriching and wonder filled learning environment. Firmly based on a respect and understanding of Rudolf Steiner's philosophy of education and supported by the Australian Steiner Curriculum, children are guided towards becoming free thinking, socially responsible adults, who experience meaningful connections with each other and the world. Silver Tree Steiner School is an independent, co-educational and non-sectarian day school welcoming children from all backgrounds and cultures.

The Education Coordinator assists the Head of School in areas of planning, development and implementation of the Australian Steiner Curriculum, plays a hands-on role inducting, mentoring and supporting teachers with the delivery of the education, assessment, reporting and appraisals. This role evaluates teaching programs and supports the implementation and assessment of learning areas within the school. This position also manages timetables and duty rosters and assumes responsibility for the school management in the absence of the Head of School.

QUALIFICATIONS

1. The ability to have a current WA Teacher Registration.

DESIRABLE CRITERIA

1. Teacher Training and/or a demonstrated understanding of the principles and curriculum of Rudolf Steiner Education;
2. Experience teaching primary school aged children in a Steiner school;
3. Demonstrated success in an Educational Leadership role within a primary school setting;
4. Excellent communication and relational skills;
5. A collaborative leadership style;
6. Commitment to further personal development;
7. An ability to implement the Australian Steiner Curriculum Framework;
8. A commitment to supporting and promoting the Silver Tree Steiner School's ethos, policies and procedures;
9. An interest and active engagement in contemporary educational, leadership and management practices.

Expressions of Interest are welcome immediately. Applications and queries should be addressed to the Head of School, Mrs Donna Bieundurry: Donna.Bieundurry@silvertree.wa.edu.au

Applicants are required to submit a letter of Application addressing the essentials of the Position Statement, Curriculum Vitae, including the names and contact numbers of three referees, one of whom must be the current employer if applicable. The Position Statement can be found on the school's website www.silvertree.wa.edu.au

Applications close Monday 9th September 2019 at 4pm.

FOOD FOR THOUGHT

STEINER GRADUATES: WHAT DO THEY GO ON TO STUDY?

SOPHIA MUNDI STEINER SCHOOL, MELBOURNE

Sophia Mundi Steiner School was established in 1985 and offers a diverse education within multi-cultural inner-city Melbourne. Each Steiner school is uniquely adapted to its community.

The contextually rich and academically strong curriculum is based on the Steiner/Waldorf philosophy that learning outcomes are dramatically improved if the timing and style of teaching are appropriate for the developmental capabilities of the student.

"If we look at the degree to which Sophia Mundi alumni excel in their chosen fields overall, it may be possible to see how well Steiner education prepares its students for the world beyond the classroom. **We strive to create a community that equips young people for their engagement with the world and the challenges of the century.**

Student academic outcomes in the Senior School validate the strong 'hand-heart' Steiner pedagogy of the Primary and Middle Schools," says Fiona Cock, Principal.

Over the course of 33 years, graduates have embraced diverse pathways, taking with them their unique experiences of Steiner education.

"The fruits of Steiner teachers' work are seen in our graduates. When you meet them, there is a general sense of uniqueness, a confidence in who they are. **They can look you in the eye with truth and impart a moral and ethical outlook to life** that is seldom experienced from other students," Fiona adds.

Sophia Mundi became an International Baccalaureate (IB) World School for years 11 and 12 in 2012. As with Steiner education, the internationally-recognised IB structures its Diploma

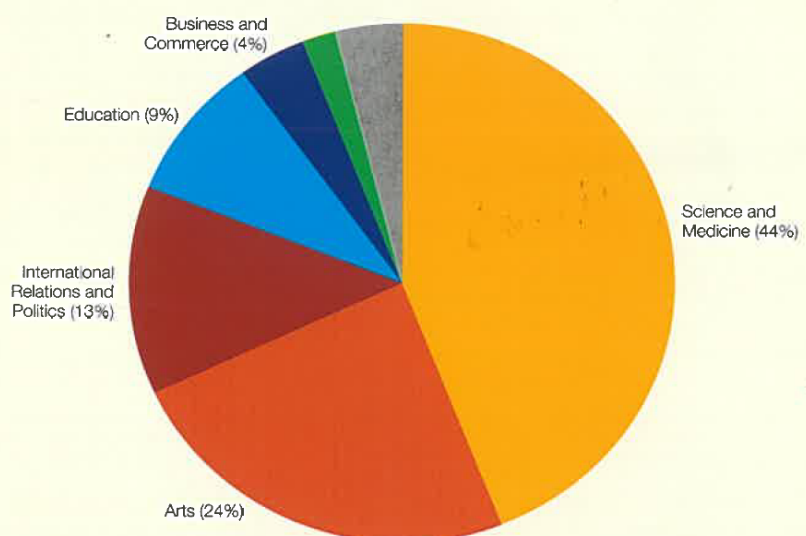
curriculum around holistic values that focus not only on the students' intellectual development but also on their growth as emotional and social beings.

Alumni data from this time (2013-2017) shows graduates have pursued a variety of degrees which translate into interesting, ethical and socially responsible career opportunities including medicine, paramedics, music, outdoor education, geology, international relations, politics, information technology, environmental science, engineering, communication, psychology, law, journalism, photography, performing arts, screen writing, and criminology.

SEA is prioritising research into Steiner graduate outcomes in Australia as a key way to assessing how well we are meeting our core tasks as Steiner educators: the development of confident and creative young people with moral purpose who are agents of change.

GRADUATE PATHWAYS 2013 - 2017

Data from the last five years conveys the passion Sophia Mundi's graduates have for Science – **44% of students** have gone on to study in the fields of **Science and Medicine**.



PIXIE STOTT CANTEEN

Canteen Open times: **Mon, Tues, Wed and Fri, 8:10am-2:00pm. Thurs 8:10am-1:30pm**
After school - Tues and Wed 3:00pm-3:15pm and Thurs 2:10pm-2:30pm.

Menu for Term 3

All Primary school students must order before school for morning tea and lunch.

Daily specials (coloured **must** be ordered):

Monday -	Pasta with hearty vegetable sauce (vegan available).	\$5.00
	Pasta with beef bolognese sauce.	\$5.00
	(GF pasta 50c extra)	
Tuesday -	Chicken and vegetable pie, vegetable pie, chicken korma pie, or chunky beef and vegetable pie.	\$5.00
	Vegetable curry (GF) (vegan).	\$5.00
Wednesday -	Vegetable chilli served with rice, corn chips, natural yoghurt and cheese. (GF) (vegan available)	\$5.00
Thursday -	Pumpkin and spinach lasagne with hand made spelt pasta (vegan).	\$5.00
	Cottage beef pie with vegetables topped with mash potato (GF)	\$5.50
Friday -	Beef burger with salad, served on wholemeal buns (GF available) or tempeh burger with salad, served on wholemeal buns (vegan and GF available).	\$6.00

Available everyday (items with a ★ **must** be ordered):

Savoury:

Soup (all soups are gluten free without croutons).			\$4.00
★ Gluten free beef pie.			\$5.50
★ Toasted chicken, spinach, sundried tomato and cheese wrap.		Whole	\$6.00
★ Toasted spinach, sundried tomato and cheese wrap.		Whole	\$5.00
★ Beef sausage in wholemeal bread.			\$2.50
Spinach and ricotta rolls.			\$4.50
Cheese and tomato toasties.	\$2.50	★ Gluten free	\$3.00
★ Toasted ham, cheese and tomato sandwiches.	\$3.50	★ Gluten free	\$4.50
★ Pizza - vegetable or meat.			\$3.00
Boiled egg (GF).			\$1.00
Popcorn (GF) (vegan).			50c

Sweet:

Cakes (assorted variety).			
Bliss balls (GF) (raw)			\$3.00
Cookies.		from	\$1.00
Dried fruit and nut pack (GF) (vegan).			\$1.00
Fresh fruit.		from	50c
Icy Poles (primary only after school).			\$1.50

Drinks:

Carton water.			\$2.00
Organic Kombucha (high school only).			\$4.00
Flavoured Bannister Downs pouches (primary only after school).			\$2.50
Slushies (primary only after school).		Sm	\$2.50 / Lg \$4.00
Organic Juices.		Sm	\$2.50 / Lg \$3.50
Coconut water.		Sm	\$2.50 / Lg \$4.00
Plain Milk.		Sm	\$1.50 / Lg \$2.50
Hot Chocolate.	Sm \$3.00 / Mug \$3.50 / Take away		\$4.50
Coffee.	Mug \$3.50 / Take away		\$4.50
Long Black.	Mug \$3.00 / Take away		\$4.00
Tea.	Mug \$2.00 / Take away		\$3.00
Herbal Tea.	Mug \$2.50 / Take away		\$3.50

***Almond or coconut milk extra \$1.00.**

Bring your own take away cup for 50c discount!

LABELS FOR BAKED GOODIES ON OPEN DAY


These labels are a requirement from the Department of Health for parents baking and donating cakes, muffins, biscuits etc. for Open Day.

Please complete labels below with **all** ingredients used, cut out and attach to the donated goods. Ensure you include: **flour, shortening, eggs and nuts**. Don't forget to label your plates, dishes etc and collect them at the end of the day.

Please bring all baked goods in the morning directly to the Bandicoot Cafe on Plaza.

If you have any questions regarding food on the day please contact Gabby on **0439 919 926**.

Thank you!

<div></div> <div>PWS Open Day</div> <div>Name/Description: _____</div> <div>Made on: _____</div> <div>Ingredients: _____ _____ _____ _____ _____</div>	<div>PWS Open Day</div> <div>Name/Description: _____</div> <div>Made on: _____</div> <div>Ingredients: _____ _____ _____ _____ _____</div>
<div>PWS Open Day</div> <div>Name/Description: _____</div> <div>Made on: _____</div> <div>Ingredients: _____ _____ _____ _____ _____</div>	<div>PWS Open Day</div> <div>Name/Description: _____</div> <div>Made on: _____</div> <div>Ingredients: _____ _____ _____ _____ _____</div>